

### Description

The KMC VCP-63 Series are 3-way, mixing valves designed to control hot or chilled water.

These valves are available in 1/2" with Cv ratings of 1.8–2.9. The VCP-63 Series feature stainless steel stems, modulating plugs, and a wide selection of spring ranges. Their construction make them ideal for many applications including fan coil units, induction units and situations requiring a compact valve.

### Features

- ◆ 3-Way Mixing
- ◆ Modulating plugs and stainless steel stems
- ◆ Variety of spring ranges

### Accessories/Repair Parts

HPO-5014	Replacement packing kit
HPO-5015	Replacement ferrule for connections
HPO-5020	Replacement nut for connections
HPO-5024	Optional 1/2" MPT fitting
HPO-5025	Optional 1/2" sweat fitting

#### Replacement Valve Tops-Neoprene Diaphragm

HPO-5104	2.3 Cv, 3–8 psi (21–55 kPa)
HPO-5105	2.3 Cv, 8–13 psi (55–90 kPa)
HPO-5106	2.3 Cv, 3–13 psi (21–90 kPa)
HPO-5108	2.3 Cv, 9–14 psi (62–96 kPa)
HPO-5101	All other Cv, 3–8 psi (21–55 kPa)
HPO-5102	All other Cv, 8–13 psi (55–90 kPa)
HPO-5103	All other Cv, 3–13 psi (21–90 kPa)
HPO-5107	All other Cv, 9–14 psi (62–96 kPa)

#### Replacement Valve Tops-Silicon Diaphragm

HPO-5134	2.3 Cv, 3–8 psi (21–55 kPa)
HPO-5135	2.3 Cv, 8–13 psi (55–90 kPa)
HPO-5136	2.3 Cv, 3–13 psi (21–90 kPa)
HPO-5138	2.3 Cv, 9–14 psi (62–96 kPa)
HPO-5131	All other Cv, 3–8 psi (21–55 kPa)
HPO-5132	All other Cv, 8–13 psi (55–90 kPa)
HPO-5133	All other Cv, 3–13 psi (21–90 kPa)
HPO-5137	All other Cv, 9–14 psi (62–96 kPa)



### Model

Choose the components that fit your application and complete the corresponding blank in the model number

VCP-63-YY- ZZZZ

#### "YY" Cv Range

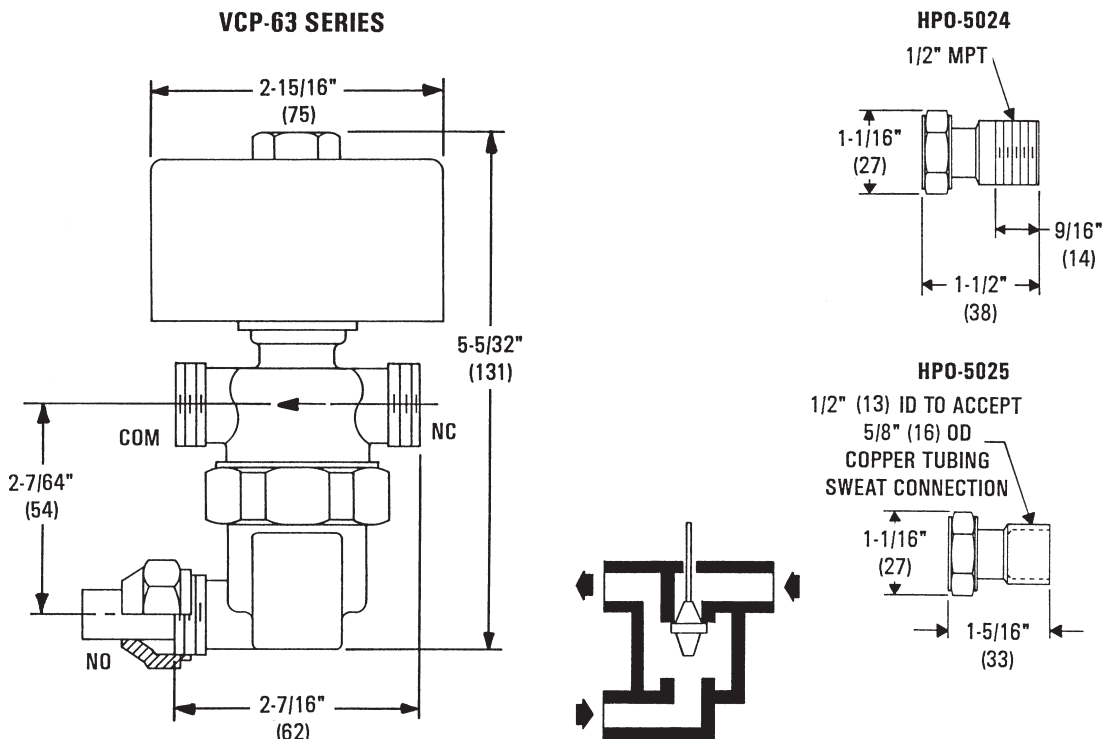
28:	1.8 Cv
29:	2.3 Cv
30:	2.9 Cv

#### "ZZZZ" Spring Range and Top Type

0221:	3–8 psi Silicone Top
0222:	8–13 psi Silicone Top
0223:	3–13 psi Silicone Top
0224:	9–14 psi Silicone Top
0231:	3–8 psi Neoprene Top
0232:	8–13 psi Neoprene Top
0233:	3–13 psi Neoprene Top
0234:	9–14 psi Neoprene Top

## Details

ALL DIMENSIONS IN INCHES (MM)



VCP-63 1/2" Cv	MAX CLOSE-OFF RATINGS IN PSI**								
	8-13 & 3-13 psi Range N.O.		3-8 psi Range N.O.		9-14 psi Range N.O.		3-8 & 3-13 psi Range N.C.	8-13 psi Range N.C.	9-14 psi Range N.C.
	15 psi*	20 psi*	15 psi*	20 psi*	15 psi*	20 psi*	0 psi*	0 psi*	0 psi*
<b>1.8, 2.3, 2.9</b>	44.4	155.5	155.5	250.0	22.2	133.3	66.6	177.7	200.0

\* Pressure applied to actuator

\*\* Not to exceed body rating

## Specifications

**Action** 3-way mixing

**Body Rating** 250 psi (1724 kPa)

**Valve Size** 1/2" male with compression nut and ferrule for 0.63" (16 mm) OD copper pipe

**Flow Characteristics** Linear

**Cv Ratings** 1.8, 2.3, 2.9

**Material** Bronze body and seat; Stainless Steel Stem; Brass plug with EPM disc; V-ring type self-adjusting EPM packing; Neoprene or silicone diaphragm; Steel top, epoxy coated; Alloy steel spring.

**Air Connections** 1/8" FPT

**Air Pressure** 25 psi (172 kPa) maximum

**Actuator Size** 5.5 sq. in. (35.5 sq. cm.)  
pneumatic, direct action

**Temperature Limits**

Medium 32° to 250° F (0° to 121° C)

Ambient 35° to 175° F (1.7° to 79° C)

Shipping -40° to 180° F (-40° to 82° C)

**Weight:** 2-3/4 lbs. (1.2 kg)

**KMC Controls, Inc.**  
19476 Industrial Drive  
New Paris, IN 46553  
574.831.5250  
www.kmcccontrols.com