

Description

The KMC VEP-568 Series butterfly control valves are 3-way straight through valves for high capacity control of low-pressure hot water, chilled water, or steam. The metal-seated butterfly valve requires less actuator operating torque and should only be used where 1 to 3 percent leakage in the closed position is acceptable. These valves are ideally suited for 3-way mixing or diverting applications.

These valves are set for a full quarter-turn (90° rotation) for optimum flow characteristics. The unique universal system of brackets and linkage allow for easy field changes.

Features

- ◆ Utilizes control actuators
- ◆ Self-adjusting packing
- ◆ Stainless steel stems
- ◆ Field changeable brackets and linkages

Accessories

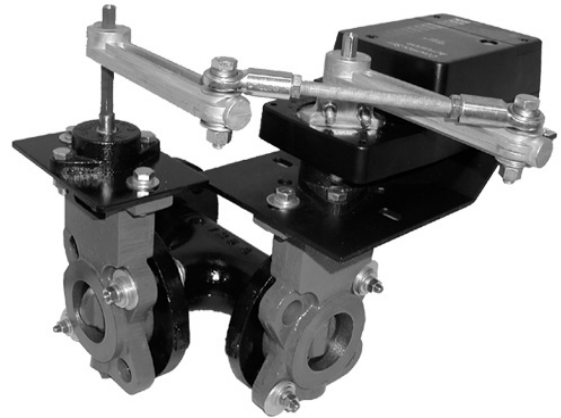
The following accessories are available:

CME-7001	Single end switch
CME-7002	Dual end switch

NOTE: Consult with the factory when service conditions are higher than 50 psi and when optional valve materials or construction are required.

Specifications

Valve Size	2" through 12"
Body Type	ANSI 125 & 150 wafer style flange mating. All models have 4 alignment holes.
Body Rating	125# Cast Iron Tee
Flow Characteristics	Linear
Cv Rating @ 90%	2"=90; 2-1/2" =194; 3"=370; 4"= 747; 5"=1272; 6" =1999; 8"=3853; 10"=6361; 12"=9164



Maximum Differential Pressure

50 psi for water
(35 psi for steam)

Pressure Drop (PSI) @ 90° Rotation

2"=1.4; 2-1/2"=0.6; 3"=0.4;
4"-10"=0.3; 12"=0.2

Material

Body	Cast Iron
Disc	Cast Iron
Seat	Swing through
Shaft	416 Stainless Steel
Bushing	Graphite Bronze
Packing	Graphite Teflon
Packing Nut	Brass to 12"=0.15

Temperature Limits

Media	25° to 280° F (-4° to 138° C)
Ambient	0° to 120° F (-18° to 49° C)
Shipping	-40° to 140° F (-40° to 60° C)

Freeze protection required for fluid temperatures below 32° F (0°C).

VEP-568XYZZZ 3-Way Metal Seat

X		Y		ZZZ	
Size	Value for "X"	Actuator Qty. & Size	Value for "Y"	Actuator (Choose one)	Value for "ZZZ"
2"	1	One (1) 100 in-lb. or 150 in-lb. Actuator	1	100 in-lb MEP-1262, 2 to 10 VDC	845
				100 in-lb MEP-1263, Tri-State, w/FB*	856
				100 in-lb MEP-1272, 2 to 10 VDC, fail-safe	875
				100 in-lb MEP-1273, Tri-State, fail-safe, w/FB*	886
				150 in-lb MEP 7002, 2 to 10 VDC	645
				150 in-lb. MEP-7003, Tri-State, w/FB*	656
				150 in-lb MEP-7052, 2 to 10 VDC, fail-safe	675
150 in-lb MEP-7053, Tri-State, fail-safe, w/FB*	686				
2-1/2"	2	One (1) 150 in-lb. Actuator	1	150 in-lb MEP 7002, 2 to 10 VDC	645
3"	3"			150 in-lb. MEP-7003, Tri-State, w/FB*	656
				150 in-lb MEP-7052, 2 to 10 VDC, fail-safe	675
3"	3"			150 in-lb MEP-7053, Tri-State, fail-safe, w/FB*	686
4"	4	One (1) 300 in-lb. Actuator	1	300 In-lb MEP-7702, 2 to 10 VDC	945
5"	5			300 in-lb MEP-7703, Tri-State, w/FB*	956
6"	6			300 in-lb MEP-7752, 2 to 10 VDC, fail-safe	975
8"	7			300 in-lb MEP-7753, Tri-State, fail-safe, w/FB*	986
10"	8	Two (2) 300 in-lb. Actuators	2	300 In-lb MEP-7702, 2 to 10 VDC	945
				300 in-lb MEP-7703, Tri-State, w/FB*	956
12"	9			300 in-lb MEP-7752, 2 to 10 VDC, fail-safe	975
				300 in-lb MEP-7753, Tri-State, fail-safe, w/FB*	986

* w/FB = with Feedback

Using the table (above) determine the "X", "Y" and "ZZZ" values that correspond to your application.

Examples of valid model numbers:

VEP-56811886: A 2" valve with one MEP-1273 actuator.

VEP-56892945: A 12" valve with two MEP-7712 actuators.

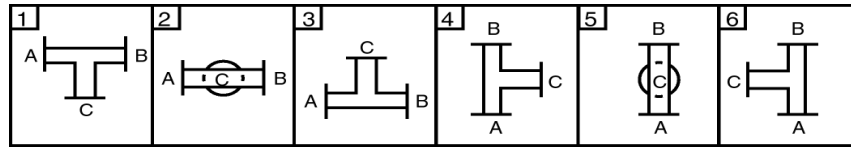
Examples of invalid model numbers:

VEP-56872645: A request for an 8" valve with two MEP-7012 (150 in-lb) actuators. The correct part number would be VEP-56871945. An 8" valve with one 300 in-lb MEP-7702 actuator.

VEP-56891975: A request for a 12" valve with only one actuator. All 12" (and 10") valves must have two actuators. The correct model number should be VEP-56892975.

Models Continued

Available Tee Configurations



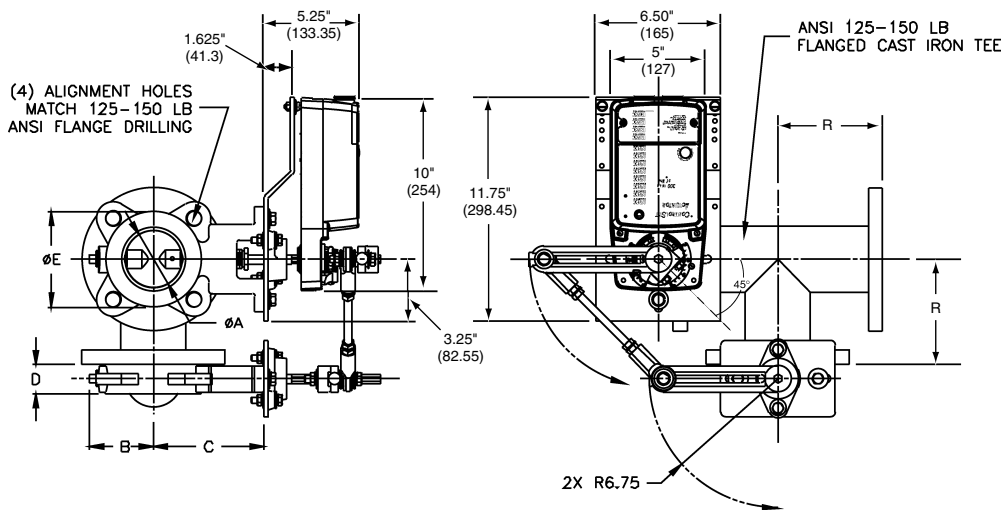
To select a "T" Configuration:

- A. Configurations are based on looking down on "T" and top of shafts.
- B. Power valve is designated by first letter followed by slave, *i.e.* 1BC.
- C. Bracket for power valve is positioned at 12 o'clock.

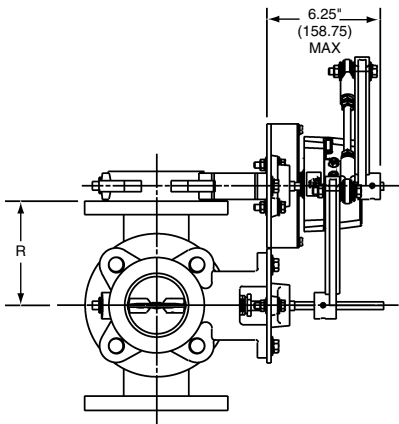
NOTE: When ordering specify Model Number AND "T" Configuration.

Details

Dimensions in inches (mm) and weight in pounds (kg)



NOTE: Valve dimensional drawings are shown with the MEP-7000 series ControlSet™ Actuators. Consult with KMC Controls' Technical Services for dimensional drawings if MEP-1200, or dual MEP-7000 Series Actuators are required.



MODELS	A	B	C	D	E	F
VEP-56811ZZZ	2" (50.8)	2-3/4" (69.85)	5-3/8" (136.53)	1-1/2" (38.1)	3-78" (98.43)	4-1/2" (114.3)
VEP-56821ZZZ	2-1/2" (63.5)	3" (76.2)	5-3/8" (136.53)	1-1/2" (38.1)	4-5/8" (117.48)	5" (127)
VEP-56831ZZZ	3" (76.2)	3-1/8" (79.38)	5-7/8" (149.23)	1-1/2" (38.1)	5-1/4" (133.35)	5-1/2" (139.7)
VEP-56841ZZZ	4" (101.6)	4-1/4" (107.95)	6-3/8" (161.93)	1-1/2" (38.1)	6-3/8" (161.93)	6-1/2" (165.1)
VEP-56851ZZZ	5" (127)	4-7/8" (123.83)	6-7/8" (174.63)	1-1/2" (38.1)	7-1/2" (190.5)	7-1/2" (190.5)
VEP-56861ZZZ	6" (152.4)	5-3/8" (136.53)	7-3/8" (187.33)	1-1/2" (38.1)	8-1/2" (215.9)	8" (203.2)
VEP-56871ZZZ	8" (203.2)	6-1/2" (165.1)	9-5/8" (244.48)	1-7/8" (47.63)	10-3/4" (273.05)	9" (228.6)
VEP-56882ZZZ	10" (254)	8" (203.2)	10-5/8" (269.88)	1-7/8" (47.63)	13" (330.2)	11" (279.4)
VEP-56892ZZZ	12" (304.8)	9-1/2" (241.3)	11-5/8" (295.28)	1-7/8" (47.63)	15-1/4" (387.35)	12" (304.8)

KMC Controls, Inc.
19476 Industrial Drive
New Paris, IN 46553
574.831.5250
www.kmcccontrols.com