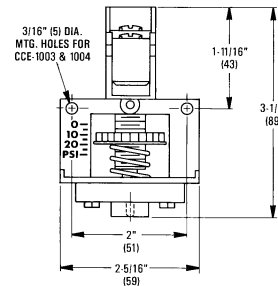
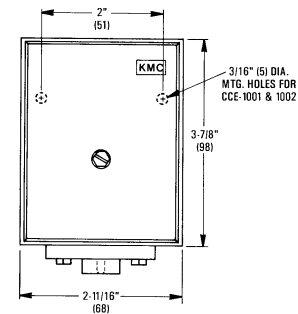


Installation Guide

Mounting

The CCE-1000 Series are not position sensitive and may be mounted in any orientation. The CCE-1001 and 1002 are shipped with a case and cover. Remove the cover before mounting the switch.

1. Locate the two 3/16" (5 mm) diameter mounting holes.
 - a. CCE-1001 and CCE-1002 mounting holes are in the case's upper back.
 - b. CCE-1003 and CCE-1004 use the two holes in the upper corners
2. Using self-threading screws, mount the switch to the surface.



Connections

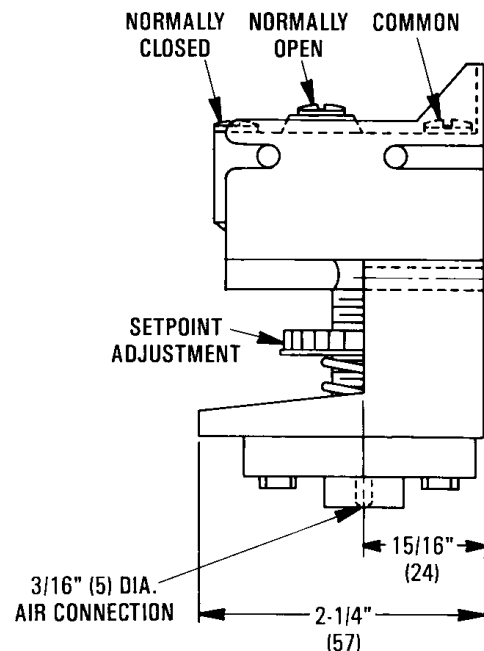
Electrical

For models CCE-1003/1004 skip step one and proceed to step two.

1. Connect conduit through one of the two 1/2" (13 mm) diameter knockouts. One snap-in plug is provided
2. Electrical connection are made to 8-32 UNC binding head combination terminal screw and cup washer terminals
 - a. Connect to the Common "C" and Normally Open "N.O." terminals if a fall in signal should break the circuit.
 - b. Connect to the Common "C" and Normally Closed "N.C." terminal if a fall in signal should make a circuit.

Air Supply

1. Using 1/4" (6 mm) O.D. polyethylene tubing, connect the main air supply to the 3/16" (5 mm) inlet in the bottom of the unit.
2. Provide unit with clean, dry control air
3. Limit the main air supply to 30 psig (207 kPa) max.



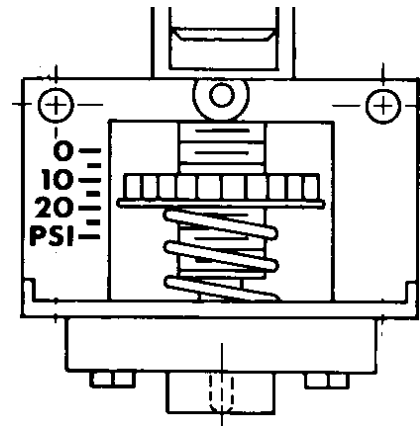
Adjustments and Calibration

1. Choose a setpoint between 2–25 psi (14–172 Kpa).

NOTE: The units have a 2 psi fixed differential

2. Turn the setpoint adjustment wheel until the bottom of the wheel lines up with the signal pressure listed on the front of the switch.
3. Replace cover on models CCE-1001/1002

NOTE: A gauge may be installed before completing step 2 to calibrate the unit to an actual signal pressure.



Maintenance

No routine maintenance is required.

Each component is designed and manufactured for reliability and performance. Careful installation and use will ensure long term dependability.

KMC Controls
P.O. Box 497
19476 Industrial Drive
New Paris, IN 46553
574.831.5250
www.kmccontrols.com