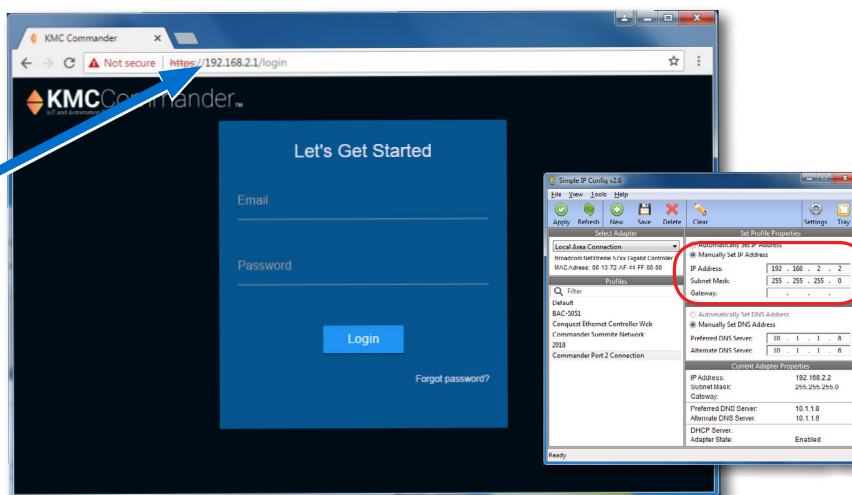




KMC Commander Port 2 Ethernet Connection

Application Guide



Contents

Introduction	1
Connecting to Port 2.....	2
Change a Computer's IP Address with a Utility	2
Change a Computer's IP Address Manually	3
Introduction	3
Windows 10 (Settings).....	3
Windows 7 (Control Panel)	4
KMC Commander Configuration.....	6
Important Notices	7
Support Documents	7

Introduction

This application guide describes how to connect to Port 2 of the KMC Commander appliance/gateway. This can be used, for example, as:

- An **Ethernet connection for initial setup** that is an alternative to using the Wi-Fi connection for initial setup.
- A **back-up connection** if both Port 1 and Wi-Fi are accidentally disabled during configuration (but Port 2 is still enabled).

NOTE: If you are unable to connect using Wi-Fi during initial setup of a new appliance/gateway, use this method instead.

NOTE: This method will not work if the default Port 2 configuration settings have been changed and the new IP address for Port 2 is forgotten.

This method may **require changing the IP address of the connecting computer**. See [Change a Computer's IP Address with a Utility on page 2](#) or [Change a Computer's IP Address Manually on page 3](#) for details.

NOTE: For additional instructions, see the [KMC Commander Installation Guide](#) on the KMC web site.



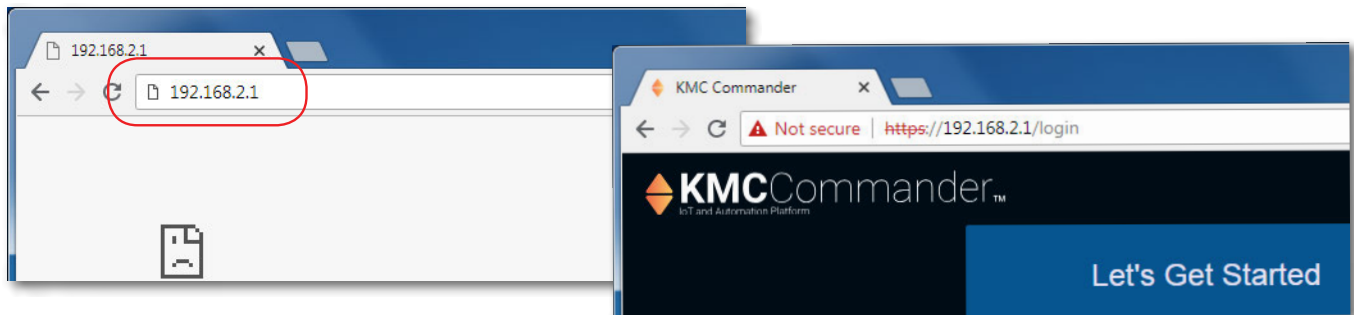
Connecting to Port 2

1. Remove the plastic cover from Port 2 if it is still inserted.

NOTE: Port 2 is the upper connector on the side opposite of the power connection.

2. Connect a laptop or PC to Ethernet Port 2 with an Ethernet patch cable.
3. Open a browser window and enter the address **192.168.2.1**:
 - If the browser connects properly to the log in screen, proceed as directed in the **KMC Commander Installation Guide**.
 - Or if **not**, change the IP address of the **computer** as described in one of the next two sections and try again.

NOTE: If the IP address for Port 2 has been changed, use the new address instead of 192.168.2.1. The following instructions are for the default address.

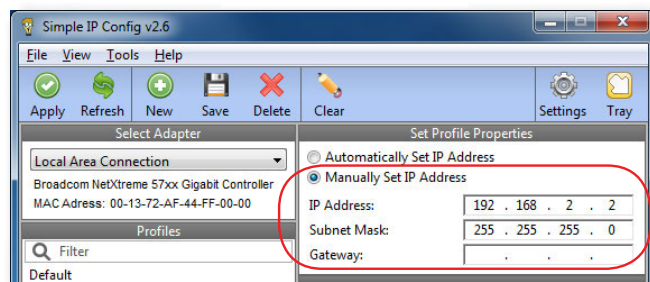


Change a Computer's IP Address with a Utility

The IP address of a computer can be changed by several different methods. The easiest method for users who will change their IP address on multiple occasions is to install an IP address changing utility (such as **Simple IP Config** available from [GitHub](#)). See the instructions with the software.

In the software:

1. **Save a record/setting of your existing computer's address information!**
2. **Enter** the following for the computer's temporary new IP address, Subnet mask, and Gateway:
 - IP address—**192.168.2.x** (where **x** is a number between 2 and 255)
 - Subnet mask—**255.255.255.0**
 - Gateway—Leave **empty** or unchanged (or if that does not work, use **192.168.2.*****, where the last digits are different than the IP address in the computer or KMC Commander)



Change a Computer's IP Address Manually

Introduction

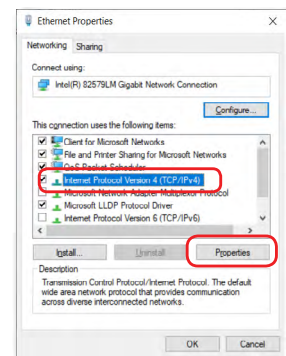
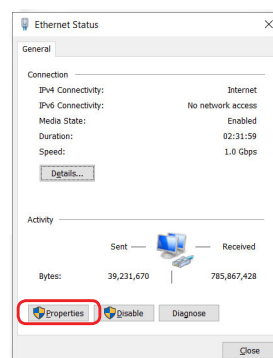
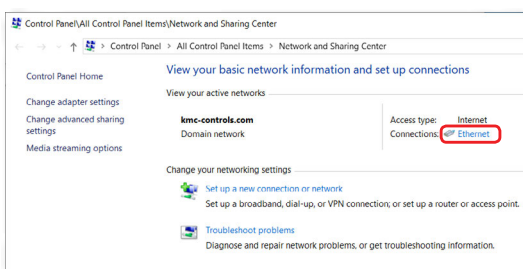
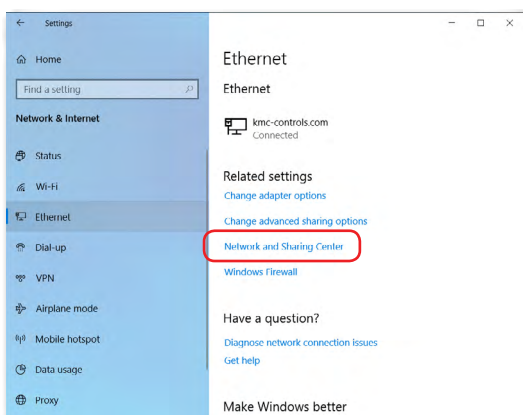
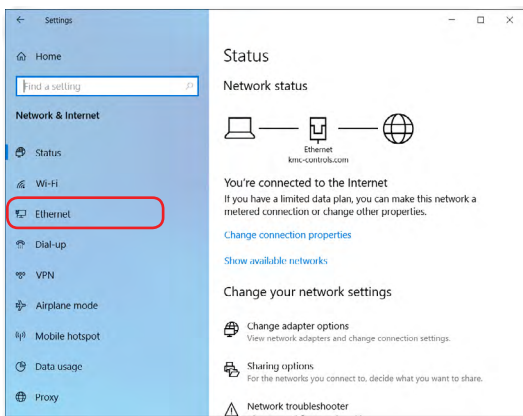
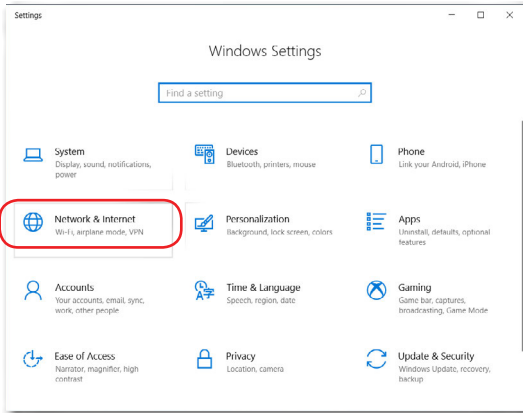
To change your computer's IP address manually, follow the instructions (or the equivalent for your hardware and operating system) for **Windows 10 (Settings)** on page 3 or **Windows 7 (Control Panel)** on page 4.

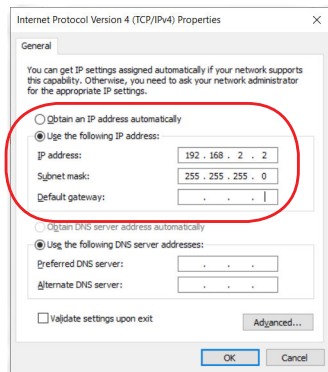
NOTE: Screens will look different in different versions of Microsoft Windows.

NOTE: Depending on the computer and version of Windows, the exact name for the connection to KMC Commander may be Ethernet, Local Area Connection, or something similar.

Windows 10 (Settings)

1. Click the **Start** button.
2. In the Start menu, click **Settings** (the gear icon).
3. In Windows Settings, click **Network and Internet**.
4. Click **Ethernet**.
5. Click **Network and Sharing Center**.
6. Click Connections: **Ethernet**.
7. Click **Properties**.
8. Click **Internet Protocol Version 4 (TCP/IPv4)** and then **Properties**.





NOTE: Record the EXISTING Properties settings!

NOTE: If **Obtain an IP address automatically** is selected, the IP address and Subnet mask of the computer are not shown. They can be seen, however, by running `ipconfig` from a command prompt. To run `ipconfig`, type `cmd` in the Search box, at Command Prompt App press **Enter**, type in `ipconfig` at the prompt, and press **Enter**.

9. Select **Use the following IP address** and then enter the following for the IP address, Subnet mask, and Gateway.

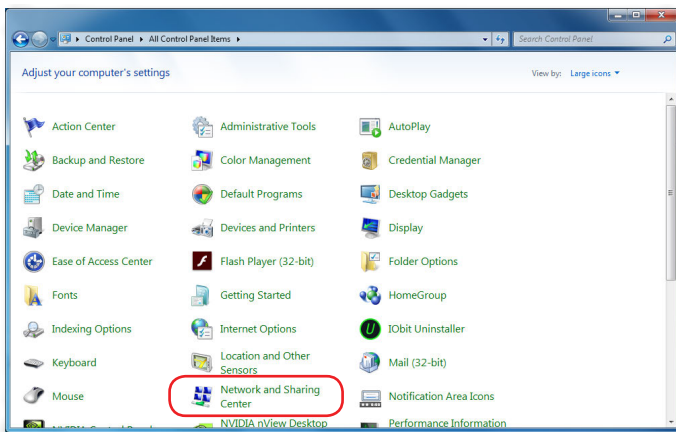
- IP address—**192.168.2.x** (where **x** is a number between 2 and 255)
- Subnet mask—**255.255.255.0**
- Gateway—Leave **empty** or unchanged (or if that does not work, use **192.168.2.*****, where the last digits are different than the IP address in the computer or KMC Commander)

10. When all information is correct, click **OK** and **OK**.

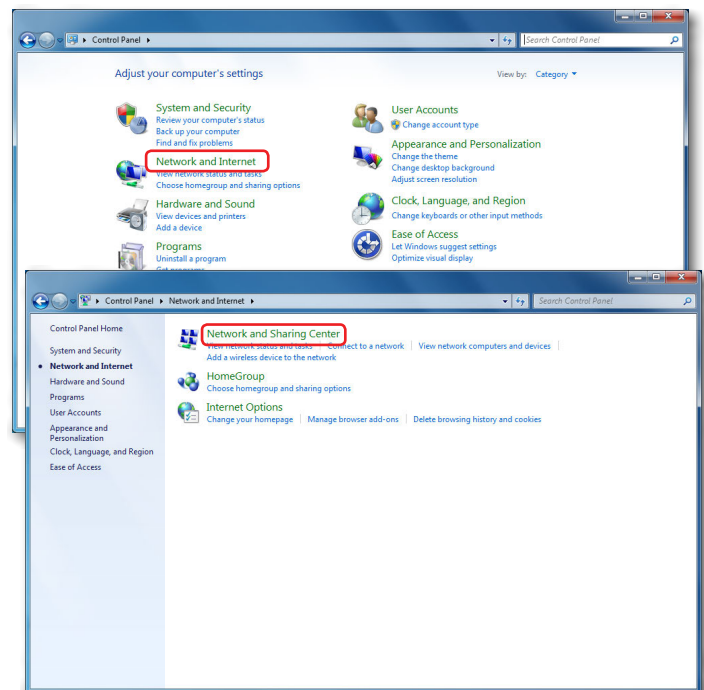
NOTE: The changes should take full effect after a few seconds.

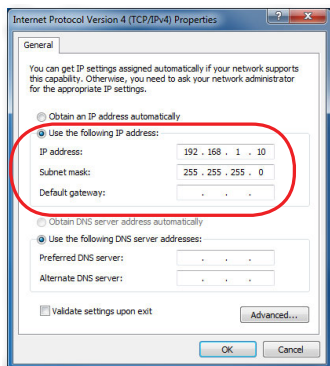
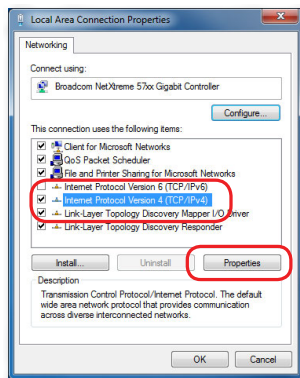
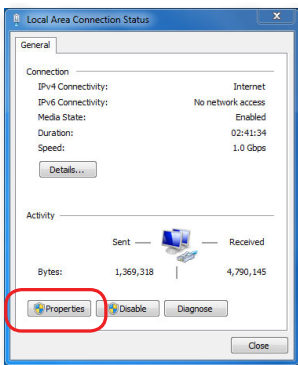
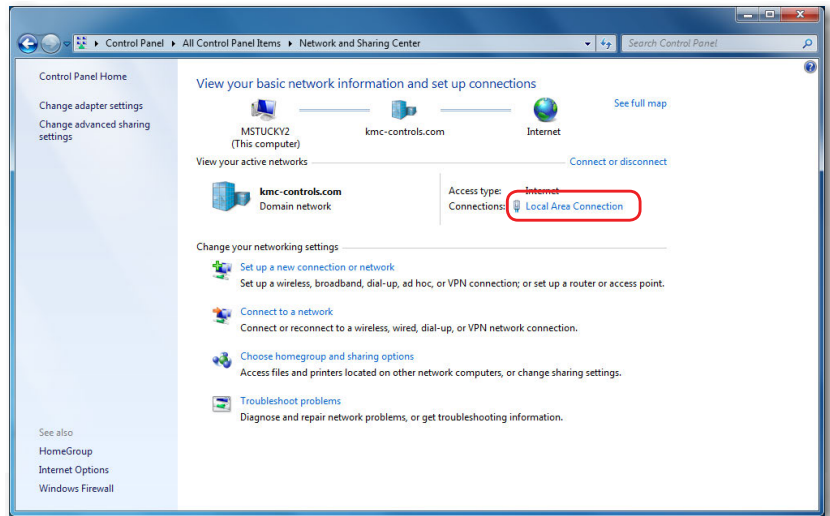
Windows 7 (Control Panel)

1. Click the **Start** button and select **Control Panel**.
2. From the Control Panel:
 - (When viewed by icons) click **Network and Sharing Center**.
 - (When viewed by category) click **Network and Internet** and then **Network and Sharing Center**.



OR





3. Click the local connection for the LAN.

NOTE: Depending on the computer and exact version of Windows, the exact name for the connection may be Ethernet, Local Area Connection, or something similar.

4. In the Local Area Connection (or similar) Status dialog, click **Properties**.

5. Click **Internet Protocol Version 4 (TCP/IPv4)** and then **Properties**.

NOTE: Record the **EXISTING** Properties settings!

NOTE: If **Obtain an IP address automatically** is selected, the IP address and Subnet mask of the computer are not shown. They can be seen, however, by running ipconfig from a command prompt. To run ipconfig, click the **Start** button, type **cmd** in the Search box, press **Enter**, type in **ipconfig** at the prompt, and press **Enter**.

6. In the Properties dialog, select **Use the following IP address** and then enter the following for the IP address, Subnet mask, and Gateway.

- IP address—**192.168.2.x** (where **x** is a number between 2 and 255)
- Subnet mask—**255.255.255.0**
- Gateway—Leave **empty** or unchanged (or if that does not work, use **192.168.2.*****, where the last digits are different than the IP address in the computer or KMC Commander)

7. When all information is correct, click **OK** and **Close**.

NOTE: The changes should take full effect after a few seconds.

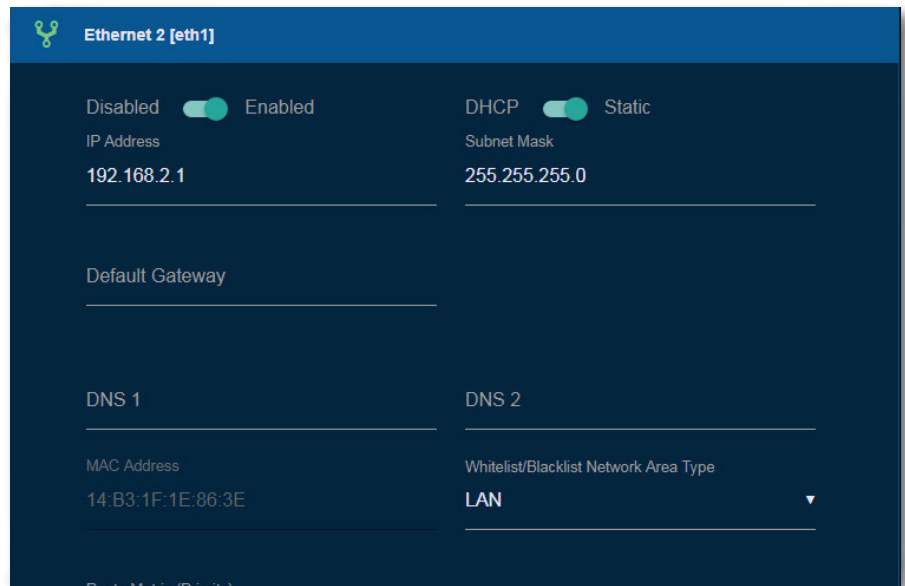
KMC Commander Configuration

After the connection with 192.168.2.1 is established, configure the settings as needed.

NOTE: For additional instructions, see the [KMC Commander Installation Guide](#) on the KMC web site.

If Port 2 is not needed for discovering devices, leaving it at the default settings allows it to remain as a “back door” for use if there is a failure in the normal communications port.

After configuration of the KMC Commander is complete, disconnect the Ethernet patch cable to Port 2, and change the computer back to its original IP settings.



The screenshot shows the configuration page for Ethernet 2 [eth1]. The interface is dark-themed with a blue header. It includes several configuration fields and toggle switches. The 'Enabled' toggle is turned on. The IP Address is set to 192.168.2.1, and the Subnet Mask is 255.255.255.0. The DHCP toggle is also turned on. The Default Gateway, DNS 1, and DNS 2 fields are empty. The MAC Address is 14:B3:1F:1E:86:3E. The Whitelist/Blacklist Network Area Type is set to LAN.

Field	Value
Enabled	Enabled
IP Address	192.168.2.1
Subnet Mask	255.255.255.0
DHCP	Enabled
Default Gateway	
DNS 1	
DNS 2	
MAC Address	14:B3:1F:1E:86:3E
Whitelist/Blacklist Network Area Type	LAN

Important Notices

The material in this document is for information purposes only. The contents and the product it describes are subject to change without notice.

KMC Controls, Inc. makes no representations or warranties with respect to this document. In no event shall KMC Controls, Inc. be liable for any damages, direct, or incidental, arising out of or related to the use of this document.

The KMC logo is a registered trademark of KMC Controls, Inc. All rights reserved.

Support Documents

The **KMC Commander** support documents are available on the KMC Controls web site (www.kmccontrols.com). Viewing all available files requires logging in to the site.

For video tutorials on KMC Commander and other products, see also the videos on **KMC's YouTube channel**.

NOTE: Documents, product design, and product specifications are subject to change without notice.

