

### DESCRIPTION

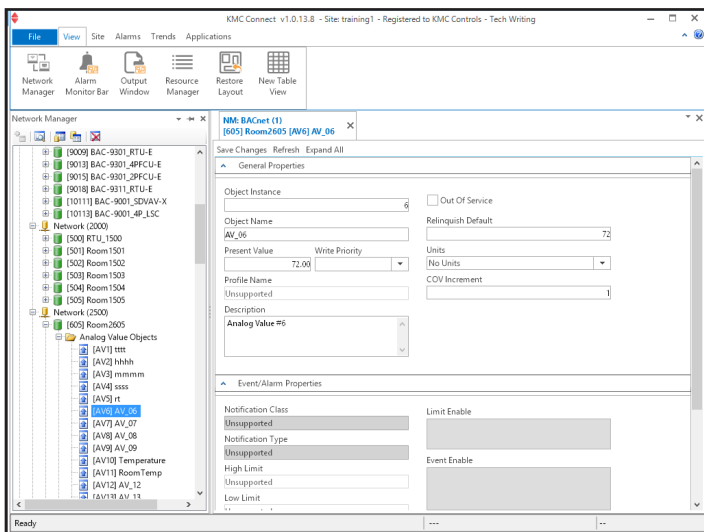
KMC Connect™ Operator Workstation is a configuration software tool used to set up KMC BACnet controllers for a building automation system.

Key time-saving features of KMC Connect include:

- Build jobs offline and then deploy them on-site with a single click.
- Wizards to quickly and easily configure alarms, schedules, and trends on native BACnet devices.
- An extensive library that includes hundreds of HVAC applications with preconfigured set-ups for KMC controllers and accompanying documentation.
- Continuous commissioning with the Audit application.
- Quickly balance VAV units with the VAV balancing application tool.

### Set up controllers

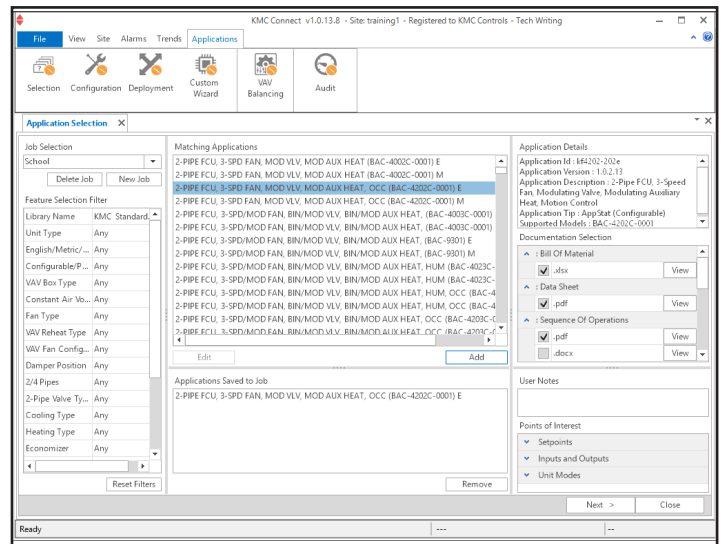
Individual devices and controllers are configured from the ribbon with text fields, drop-down lists, and wizards.



### Wizards and applications

The KMC Connect wizards and applications are time saving tools for the technician setting up a building automation system.

- **Application library**—Choose, customize, and deploy to Conquest controllers applications for VAV, air handlers, roof top units, and heat pumps.
- **Audit**—Capture a baseline of a controller configuration and then, in the future, detect changes to the configuration.
- **VAV balancing**—A software alternative to using a digital sensor to balance BAC-8000 or BAC-9000 series VAV controllers.
- **Alarm Wizard**—Set up alarms with custom email messages in one or multiple objects.
- **Trend Wizard**—Configure one or several trend logs with the Trend Wizard. Supports intrinsic, algorithmic, COV, and PC based trends.
- **Input Wizards**—Set up properties for analog and binary input objects in Conquest controllers.
- **Output Wizard**—Set up properties for analog output objects in Conquest controllers.



## Supported protocols

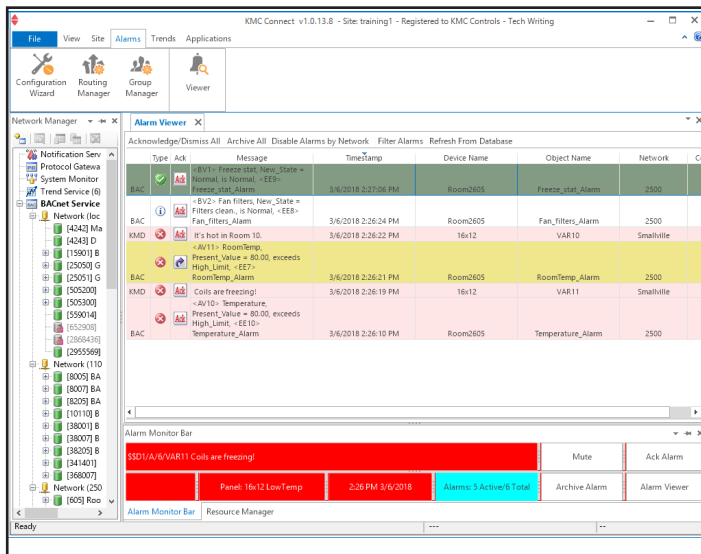
KMC Connect supports the following network connection methods:

- BACnet-IP, 8802.3, Foreign Device, and BBMD
- KMDigital-Tier 1, Tier 2 connected to Tier 1 controllers, and Tier 2 direct serial connection
- OPC as an OPC data acquisition client

## Manage and acknowledge alarms

Use KMC Connect to set up alarms to notify key operators of critical events.

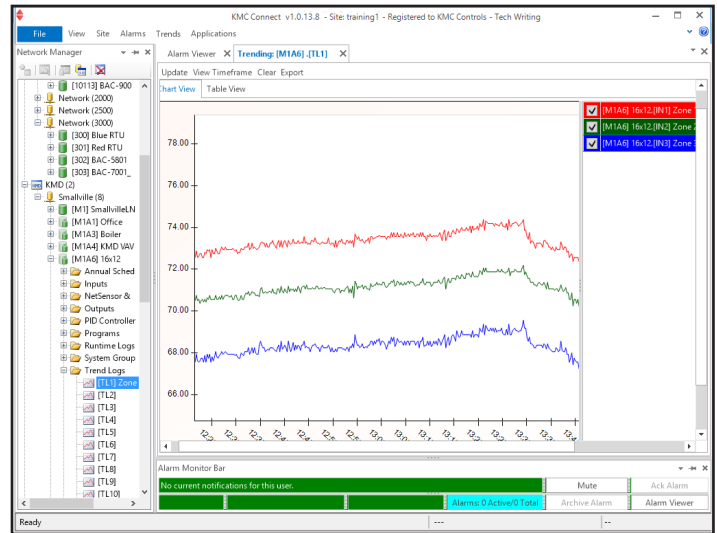
- View and acknowledge alarms.
- Set up key operator notifications with custom email messages.
- Easily set up single or multiple object alarms with the Alarm Wizard.



## Schedule events

Set up BACnet Schedule objects for holidays, maintenance schedules, and special days for up to a full year.

- Schedule recurring daily activities with weekly schedules in BACnet Schedule objects.
- Use exception schedules or Calender objects to override weekly schedules during holidays and special events.



## Gather and store trend logs

Configure KMC Connect to collect trend data from either controller based trends or polling a point and storing the data in the KMC Connect database.

- Easily set up one or several trend logs with the Trend Wizard.
- Retrieve and view trend data in stored trend log objects.
- Monitor live values from multiple objects with the Trend Viewer.

## Computer system requirements

KMC Connect runs on any of the following versions of Microsoft Windows.

- Windows 7 Professional
- Windows 7 Ultimate
- Windows 8 and 8.1 Professional
- Windows 10 Professional
- Windows Server 2008 R2
- Windows Server 2012 R2
- Windows Server 2016

A complete list of computer requirements is listed in the document *KMC Connect Installation and Reference Guide* that is available to our partner organizations.

# Block or line programming

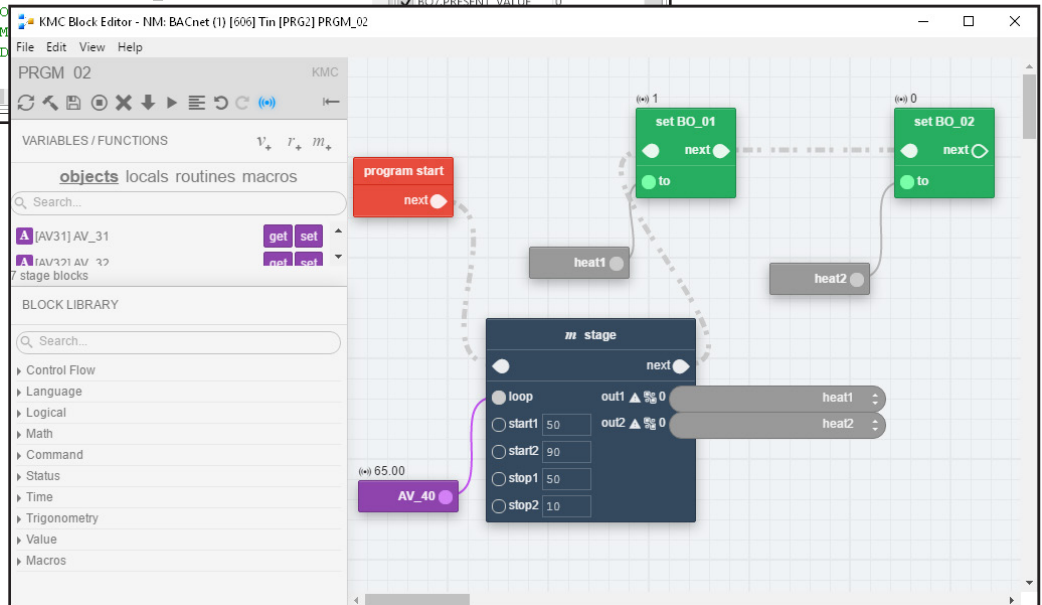
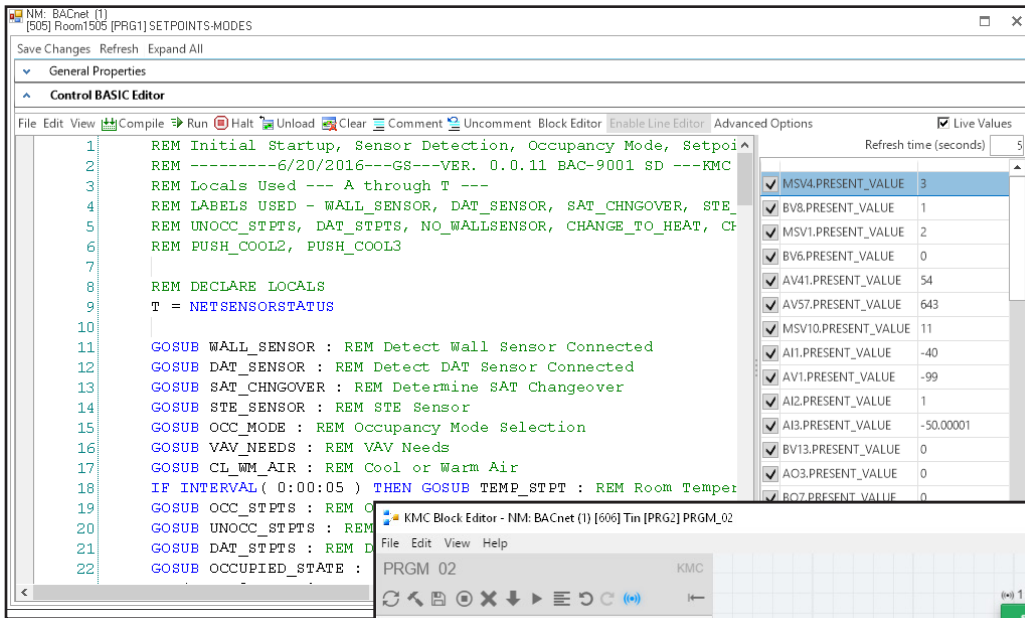
KMC Connect offers the choice to use a traditional line editor to write Control Basic programs or to use the block editor for a graphical programming interface.

**Line programming** The KMC Connect line code editor supports all versions of field programmable BACnet controllers from KMC Controls.

- Traditional programming with Control Basic, a language built on ANSI BASIC
- Color-coded text
- Automatic keyword display
- Full find and replace functions
- Displays live values of referenced objects

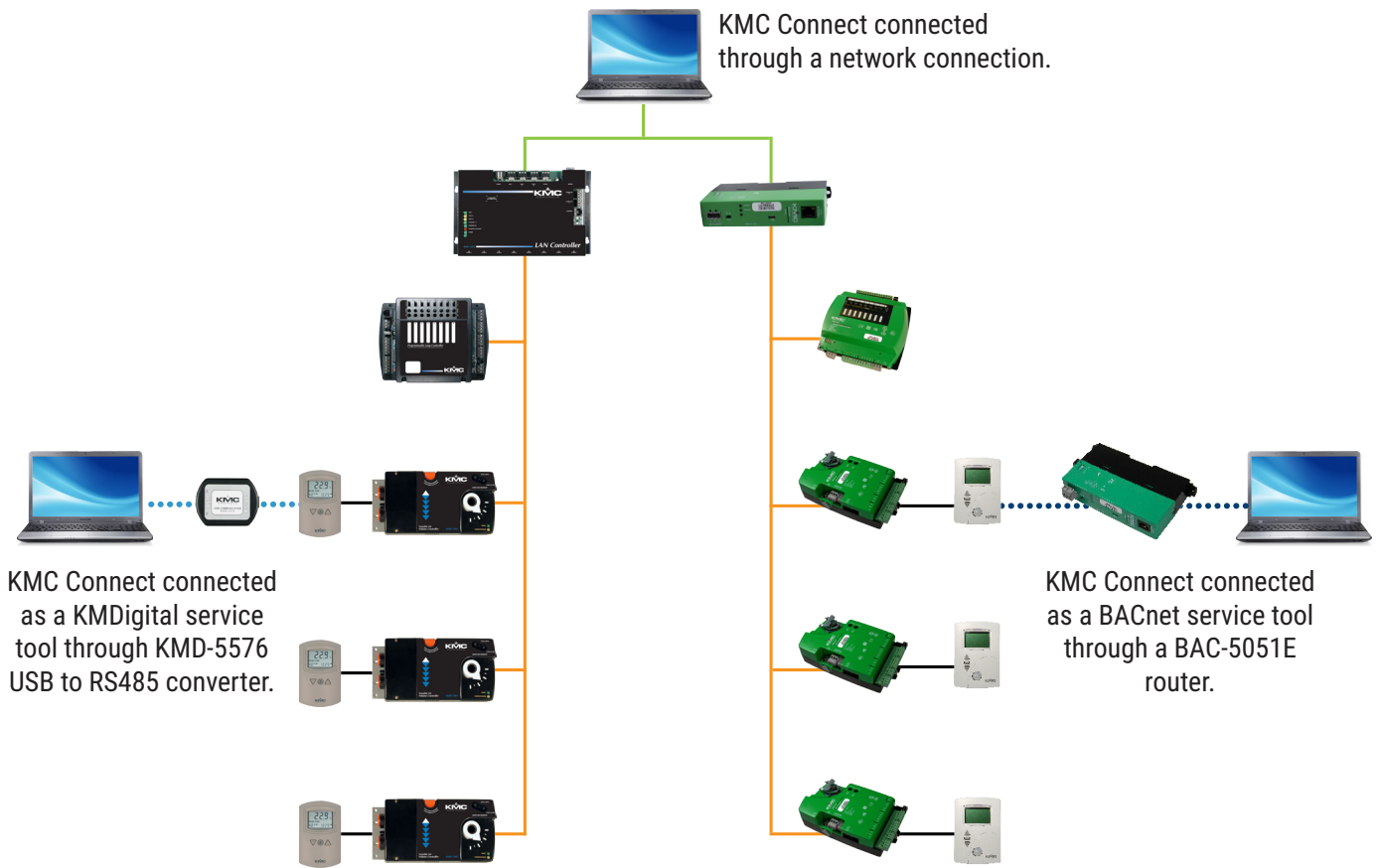
**Block programming** Block programming is fully supported in BAC-5901, BAC-9001, BAC-9021, BAC-9301, and BAC-9311 Conquest controllers.

- Simple, graphical drag-and-drop programming
- Built in macros for common functions such as reset and short cycling
- Global user defined macros
- Stored in the controller
- Displays live values of referenced objects



# SYSTEM CONNECTIONS

Connect KMC Connect to a building automation system through the building's existing network, an MS/TP connection with a BAC-5051E router and HPO-5551 cable kit, or a KMD-5576 USB to RS485 converter.



# ORDERING INFORMATION

Each copy of KMC Connect is licensed to end-users for use on one computer at a time. Order a hardware license key for each copy of KMC Connect. The hardware license key requires a dedicated USB port.

DESCRIPTION	MODEL
KMC Connect Site License For BACnet and KMDigital Sites	Connect-All
KMC Connect Site License For BACnet Sites	Connect-BAC
KMC Connect Site License For KMDigital Sites	Connect-KMD
KMC Controls Hardware License Key	HW-KEY

# SUPPORT

Additional resources for installation, configuration, application, operation, programming, upgrading and much more are available on the web at [www.kmcccontrols.com](http://www.kmcccontrols.com). To see all available files, log-in to the KMC Partners site.