

DESCRIPTION

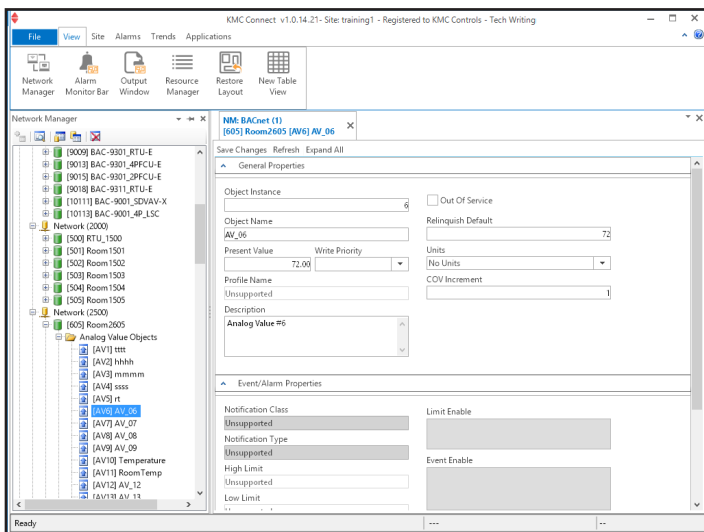
KMC Connect™ Operator Workstation is a configuration software tool used to set up KMC BACnet controllers for a building automation system.

Key time-saving features of KMC Connect include:

- Build jobs offline and then deploy them on-site with a single click.
- Wizards to quickly and easily configure alarms, schedules, and trends on native BACnet devices.
- An extensive library that includes hundreds of HVAC applications with preconfigured set-ups for KMC controllers and accompanying documentation.
- Continuous commissioning with the Audit application.
- Quickly balance VAV units with the VAV balancing application tool.

Set up controllers

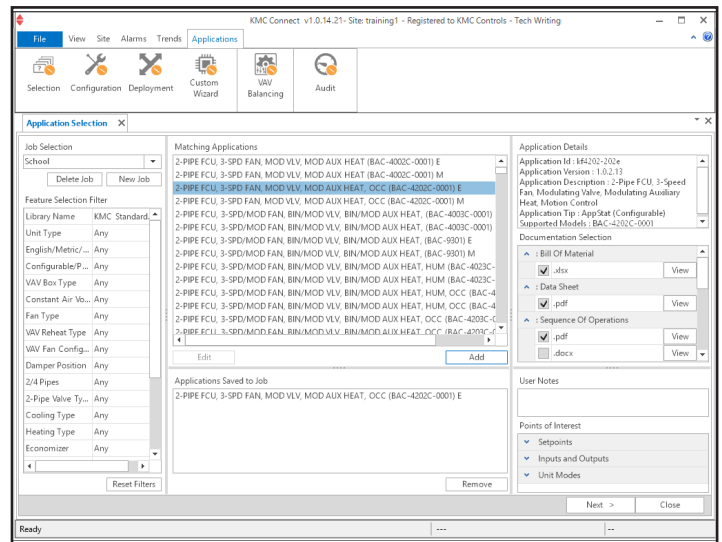
Individual devices and controllers are configured from the ribbon with text fields, drop-down lists, and wizards.



Wizards and applications

The KMC Connect wizards and applications are time saving tools for the technician setting up a building automation system.

- **Application library**—Choose, customize, and deploy to Conquest controllers applications for VAV, air handlers, roof top units, and heat pumps.
- **Audit**—Capture a baseline of a controller configuration and then, in the future, detect changes to the configuration.
- **VAV balancing**—A software alternative to using a digital sensor to balance BAC-8000 or BAC-9000 series VAV controllers.
- **Alarm Wizard**—Set up alarms with custom email messages in one or multiple objects.
- **Trend Wizard**—Configure one or several trend logs with the Trend Wizard. Supports intrinsic, algorithmic, COV, and PC based trends.
- **Input Wizards**—Set up properties for analog and binary input objects in Conquest controllers.
- **Output Wizard**—Set up properties for analog output objects in Conquest controllers.



Supported protocols

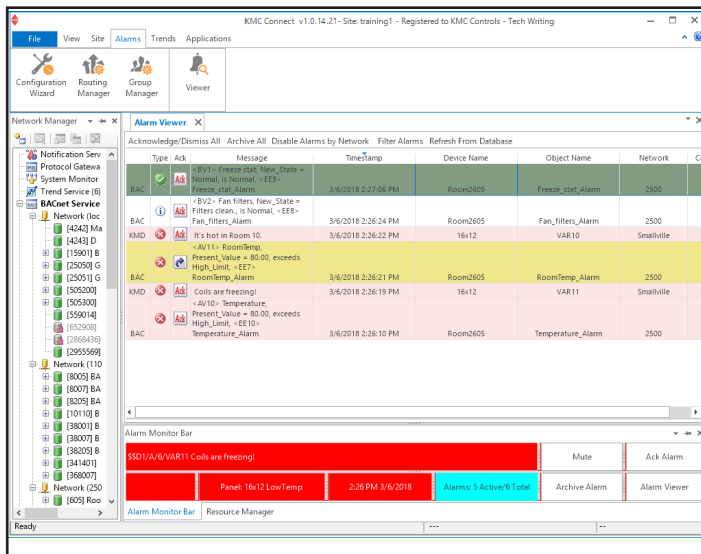
KMC Connect supports the following network connection methods:

- BACnet-IP, 8802.3, Foreign Device, and BBMD
- KMDigital-Tier 1, Tier 2 connected to Tier 1 controllers, and Tier 2 direct serial connection
- OPC as an OPC data acquisition client

Manage and acknowledge alarms

Use KMC Connect to set up alarms to notify key operators of critical events.

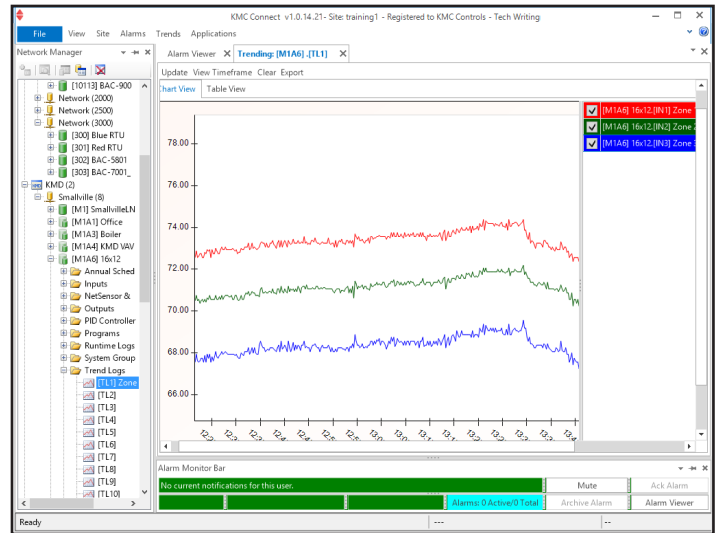
- View and acknowledge alarms.
- Set up key operator notifications with custom email messages.
- Easily set up single or multiple object alarms with the Alarm Wizard.



Schedule events

Set up BACnet Schedule objects for holidays, maintenance schedules, and special days for up to a full year.

- Schedule recurring daily activities with weekly schedules in BACnet Schedule objects.
- Use exception schedules or Calender objects to override weekly schedules during holidays and special events.



Gather and store trend logs

Configure KMC Connect to collect trend data from either controller based trends or polling a point and storing the data in the KMC Connect database.

- Easily set up one or several trend logs with the Trend Wizard.
- Retrieve and view trend data in stored trend log objects.
- Monitor live values from multiple objects with the Trend Viewer.

Computer system requirements

KMC Connect runs on any of the following versions of Microsoft Windows.

- Windows 7 Professional
- Windows 7 Ultimate
- Windows 8 and 8.1 Professional
- Windows 10 Professional
- Windows Server 2008 R2
- Windows Server 2012 R2
- Windows Server 2016
- Windows Server 2019

A complete list of computer requirements is found in the document *KMC Connect Installation and Reference Guide*, available to our partner organizations.

Block or line programming

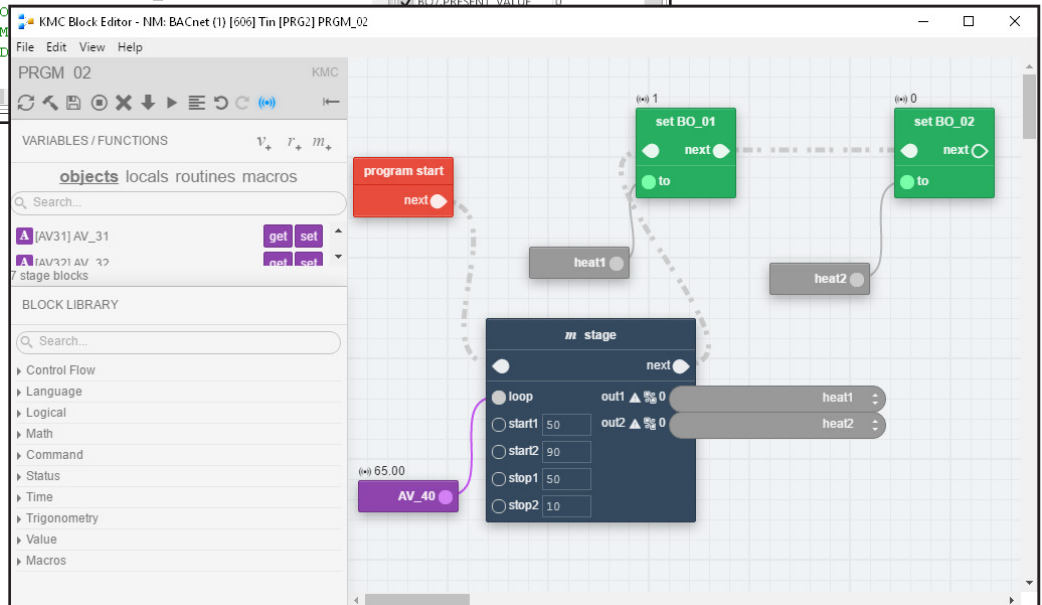
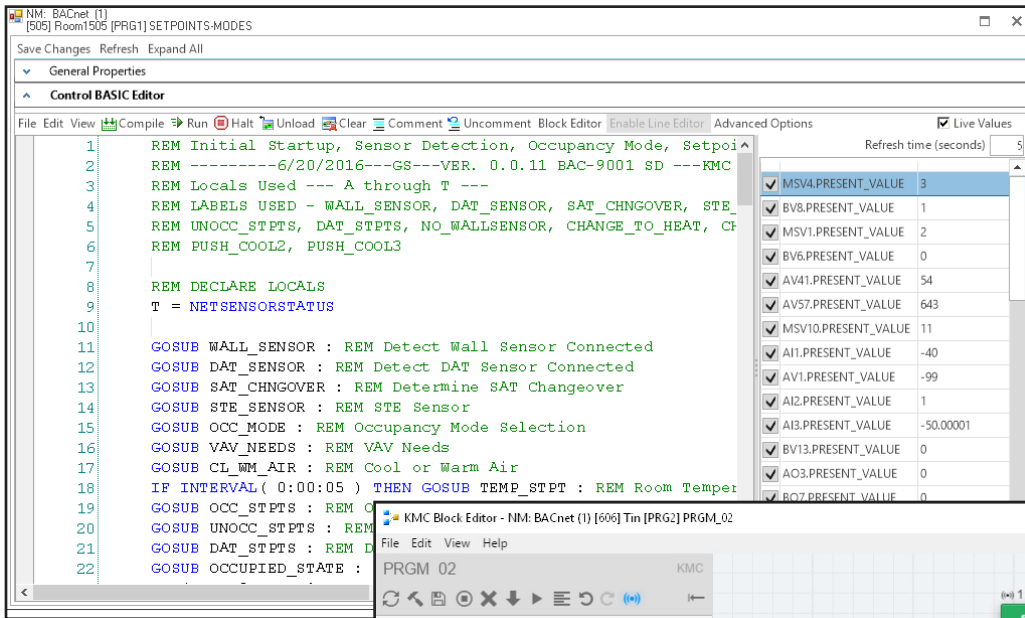
KMC Connect offers the choice to use a traditional line editor to write Control Basic programs or to use the block editor for a graphical programming interface.

Line programming The KMC Connect line code editor supports all versions of field programmable BACnet controllers from KMC Controls.

- Traditional programming with Control Basic, a language built on ANSI BASIC
- Color-coded text
- Automatic keyword display
- Full find and replace functions
- Displays live values of referenced objects

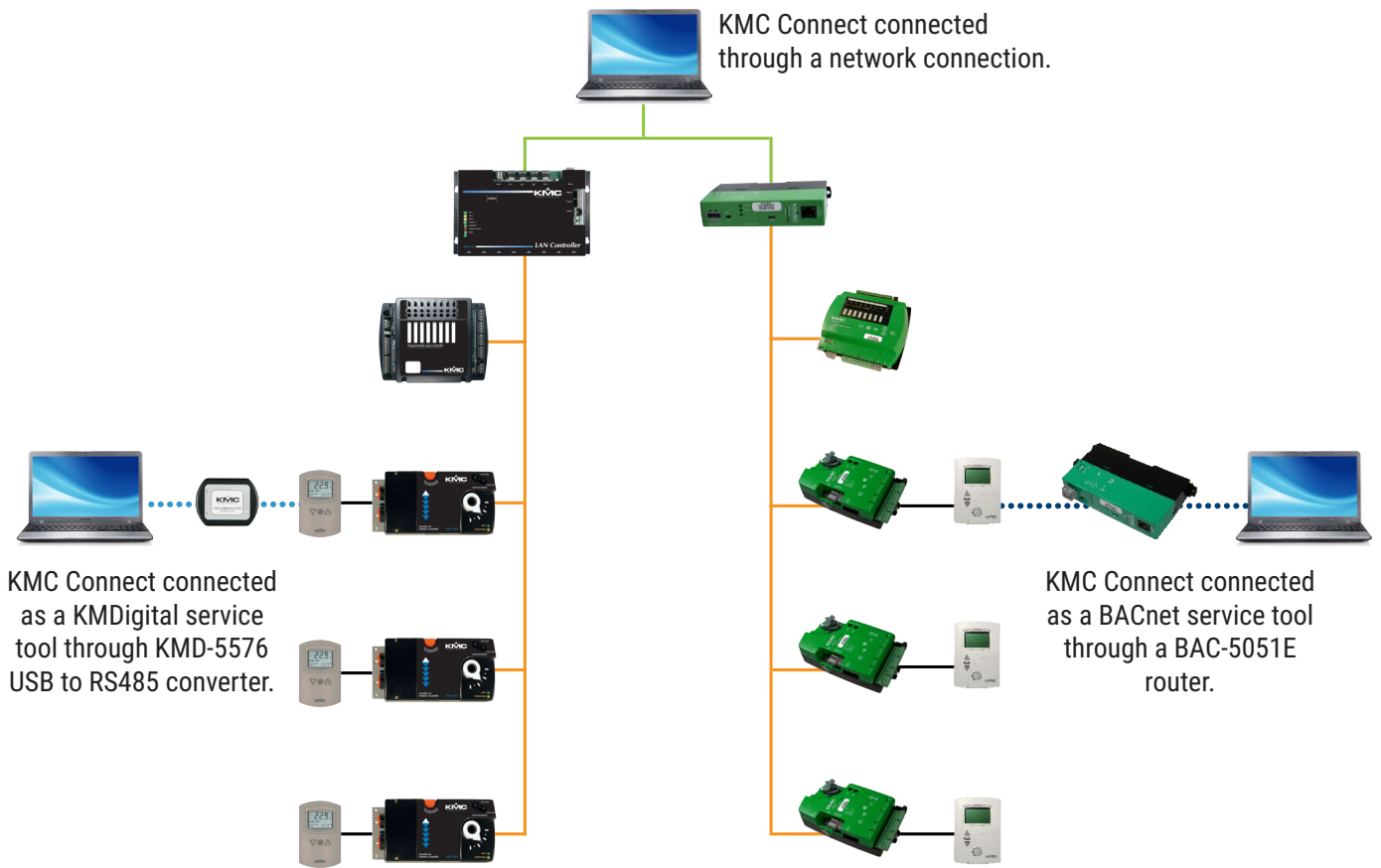
Block programming Block programming is fully supported in BAC-5901, BAC-9001, BAC-9021, BAC-9301, and BAC-9311 Conquest controllers.

- Simple, graphical drag-and-drop programming
- Built in macros for common functions such as reset and short cycling
- Global user defined macros
- Stored in the controller
- Displays live values of referenced objects



SYSTEM CONNECTIONS

Connect KMC Connect to a building automation system through the building's existing network, an MS/TP connection with a BAC-5051E router and HPO-5551 cable kit, or a KMD-5576 USB to RS485 converter.



ORDERING INFORMATION

Each copy of KMC Connect is licensed to end-users for use on one computer at a time. Order a hardware license key for each copy of KMC Connect. The hardware license key requires a dedicated USB port.

DESCRIPTION	MODEL
KMC Connect Site License For BACnet and KMDigital Sites	Connect-All
KMC Connect Site License For BACnet Sites	Connect-BAC
KMC Connect Site License For KMDigital Sites	Connect-KMD
KMC Controls Hardware License Key	HW-KEY

SUPPORT

Additional resources for installation, configuration, application, operation, programming, upgrading and much more are available on the web at www.kmcccontrols.com. To see all available files, log-in to the KMC Partners site.