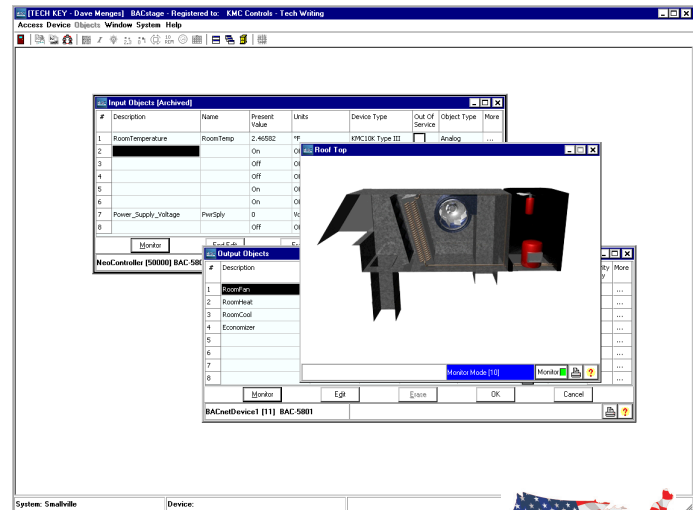


BACstage Operator Workstation from KMC Controls is a basic software tool with which you can program KMC BACnet controllers for a building automation system.

- ◆ Worksheet style entry and drop-down list boxes makes programming quick and easy.
- ◆ Password protected
- ◆ Quickly create graphical user interfaces with easy to use drag and drop group displays.

Easy Programming

- ◆ Required for full access to features in KMC BACnet controllers starting with firmware releases 1.7.
- ◆ Configure KMC Controls BACnet devices with MAC addresses, device instance numbers and baud rate.
- ◆ Configure objects in third-party controllers.
- ◆ Configure standard BACnet objects in controllers.
- ◆ Identify inputs, outputs, and other functions with easy to remember names and descriptions.
- ◆ Assign standard device types for both analog and digital objects.
- ◆ Full control over built-in PID control loop routines.
- ◆ Write, compile and send building automation programs with the BACnet Control Basic editor
- ◆ Automatically synchronize system time to computer time.
- ◆ Save configuration files to disk.
- ◆ Prepare configuration files off-line with the simulator mode.

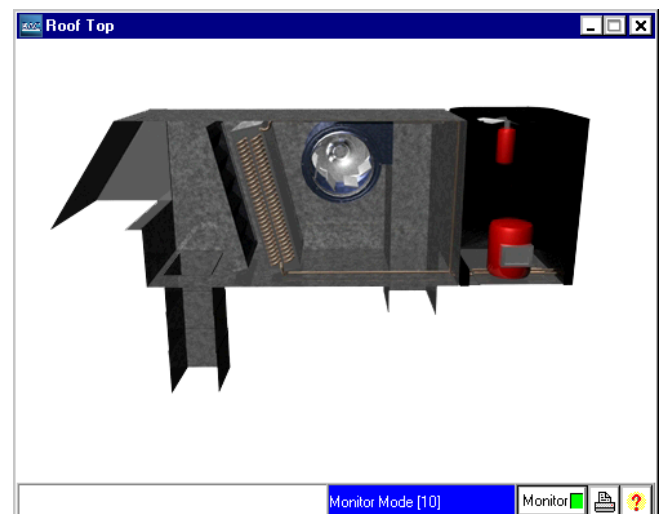


Still ... Made in the U.S.A.

Custom group displays

Design and construct operator friendly graphic interfaces with BACstage group displays. Use the extensive KMC Controls graphic libraries to build custom graphics for chillers, boilers, roof top units, air handlers and more.

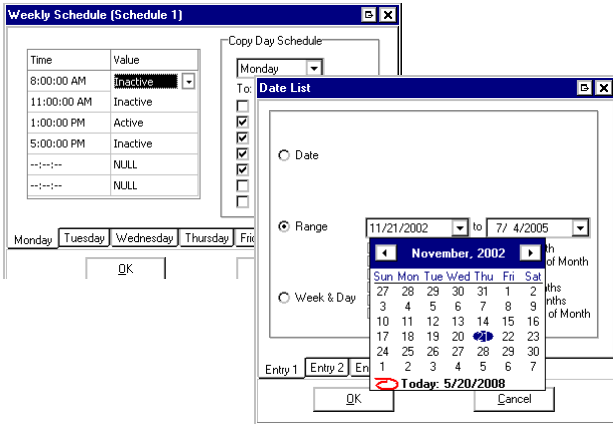
- ◆ Add motion to displays with animation files
- ◆ Easily drag-and-drop links to other group displays or object properties on the display.
- ◆ Add links from site or floor plans to critical equipment or control points.
- ◆ Use graphics from any program that generates bmp, jpg, gif, wmf or emf file types.



Scheduling

Schedule special holidays, maintenance schedules and special days

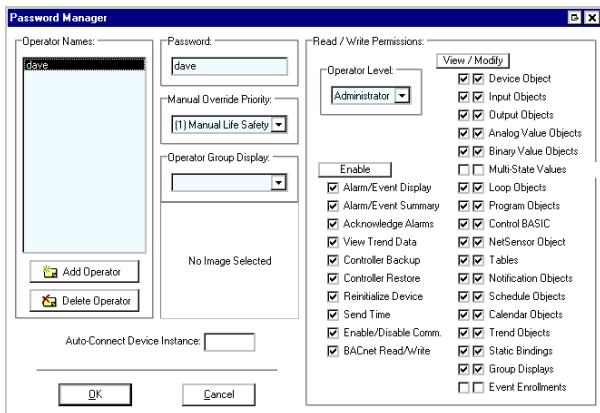
- ◆ Program BACnet schedule objects in individual controllers for recurring daily activities.
- ◆ Create special days such as holidays in the controller's calendar objects that override the weekly schedules.



Security

BACstage security locks out tampering and still permits authorized operators to make system changes.

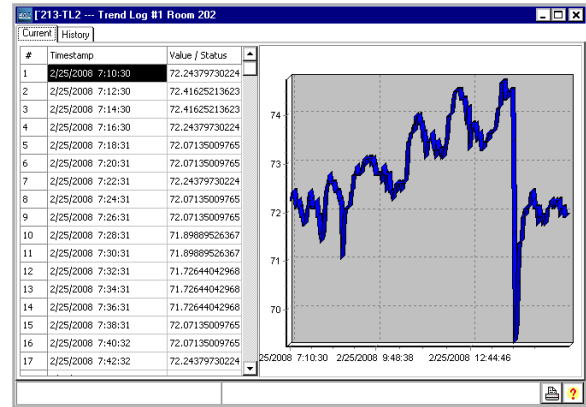
- ◆ By-name, password protection prevents unauthorized access
- ◆ Logs operator sign-in, sign-out and other significant operator action.
- ◆ Choose from four preset levels or create a custom level for each operator



Data logging

Use BACstage to retrieve and display temperature, humidity or any performance data stored in each controller.

- ◆ Verify actual system performance
- ◆ Capture equipment duty cycle
- ◆ View trend objects from any controller
- ◆ Display data as graphs or text.
- ◆ Retrieve and save logs for analysis in programs such as Microsoft® Excel.



Connectivity

Supports the following internetwork connection methods:

- ◆ MS/TP
- ◆ Ethernet 8802-3
- ◆ Ethernet IP
- ◆ Register as foreign device to a BBMD (BACnet broadcast management device)
- ◆ PTP including modem

Computer system requirements

BACstage requires a computer that meets the following specifications.

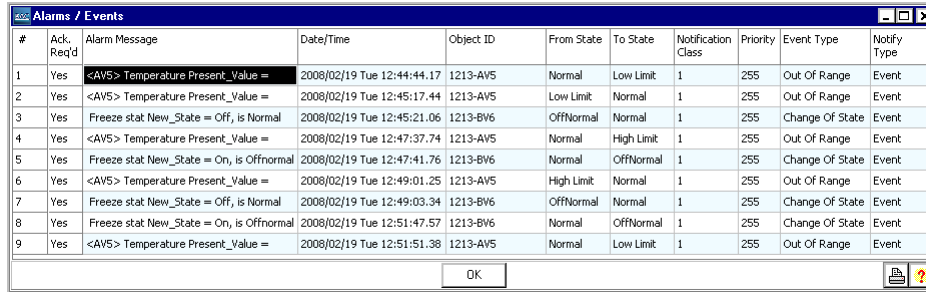
- ◆ Windows 8 Professional
- ◆ Windows 7 Professional
- ◆ Windows 7 Ultimate
- ◆ Windows Server 2003 SP2
- ◆ Windows Server 2008 SP2
- ◆ Windows Server 2012 R2
- ◆ Windows Vista Business
- ◆ Windows Vista Ultimate
- ◆ Windows® XP Professional SP3

A complete list of computer requirements are listed in the document *Installing BACstage* which is available to our partner organizations.

Manage alarms

Setting up alarms and events with BACstage keeps you informed of critical operating conditions.

- ◆ Program, view and acknowledge alarms.
- ◆ Manage recipient lists in notification class objects.
- ◆ View an alarm summary for each device.
- ◆ Custom alarm messages.
- ◆ Audible notification of incoming alarms.



#	Ack. Req'd	Alarm Message	Date/Time	Object ID	From State	To State	Notification Class	Priority	Event Type	Notify Type
1	Yes	<AVS> Temperature Present_Value =	2008/02/19 Tue 12:44:44.17	1213-AV5	Normal	Low Limit	1	255	Out Of Range	Event
2	Yes	<AVS> Temperature Present_Value =	2008/02/19 Tue 12:45:17.44	1213-AV5	Low Limit	Normal	1	255	Out Of Range	Event
3	Yes	Freeze stat New_State = Off, is Normal	2008/02/19 Tue 12:45:21.06	1213-BV6	OffNormal	Normal	1	255	Change Of State	Event
4	Yes	<AVS> Temperature Present_Value =	2008/02/19 Tue 12:47:37.74	1213-AV5	Normal	High Limit	1	255	Out Of Range	Event
5	Yes	Freeze stat New_State = On, is Offnormal	2008/02/19 Tue 12:47:41.76	1213-BV6	Normal	OffNormal	1	255	Change Of State	Event
6	Yes	<AVS> Temperature Present_Value =	2008/02/19 Tue 12:49:01.25	1213-AV5	High Limit	Normal	1	255	Out Of Range	Event
7	Yes	Freeze stat New_State = Off, is Normal	2008/02/19 Tue 12:49:03.34	1213-BV6	OffNormal	Normal	1	255	Change Of State	Event
8	Yes	Freeze stat New_State = On, is Offnormal	2008/02/19 Tue 12:51:47.57	1213-BV6	Normal	OffNormal	1	255	Change Of State	Event
9	Yes	<AVS> Temperature Present_Value =	2008/02/19 Tue 12:51:51.38	1213-AV5	Normal	Low Limit	1	255	Out Of Range	Event

Ordering information

Each copy of BACstage is licensed to end-users for use on one computer at a time. Order a hardware license key for each copy of BACstage. The hardware license key requires a dedicated USB port. See next page for computer system requirements.

Model number	Ordering description
HW-KEY	KMC Controls Hardware License Key
BAC-5000	BACstage Operator Workstation



KMC Controls, Inc.
19476 Industrial Drive
New Paris, IN 46553
574.831.5250
www.kmcccontrols.com
info@kmcccontrols.com