



# Conquest BAC-5051E

## BACnet Router

### DESCRIPTION

The KMC Controls BAC-5051E is a multi-port BACnet router. This compact router is powerful enough for heavy network traffic and small enough to use as a control technician's service tool.

**Routing** Install the BAC-5051E for BACnet IP, Ethernet, and MS/TP routing. The IP routing is fully compliant with BACnet Standard 134-2012, Annex J.

**Browser Configuration** Configure the BAC-5051E using only an Internet browser. No special software to learn or load.

**Flexible Mounting** Two mounting choices for permanent installations—DIN rails or surface mount.

**Diagnostics** Embedded metrics include: total number of devices, frame counts, frames in error, data frames, duplicate MAC addresses, token passing, and poll-for-master count.

**MS/TP Diagnostics Capture** Troubleshoot MS/TP issues by capturing, saving, and analyzing network traffic. Data is saved in industry standard .pcap files.

**Automatically Learns Networks** Detects and configures routing for the actual discovered networks.

**Enable and Disable Routing** Use the router as a diagnostic tool to monitor traffic without routing traffic.

**VAV Airflow Balancing** Use with an Internet browser as an airflow balancing tool for BAC-8000 and BAC-9000 series VAV controllers.

**Zone Configuration** Use the router to set up a [BAC-120063CW-ZEC zoning Flexstat](#).

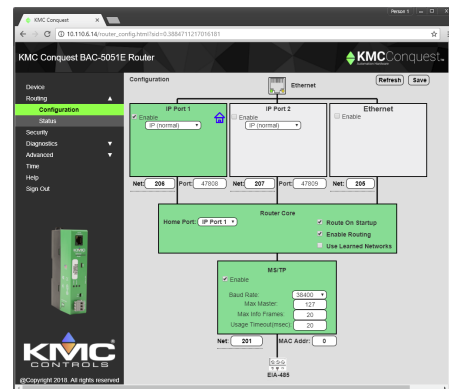
### SPECIFICATIONS

#### Configuration Tools

Normal configuration from internally served browser pages. Requires HTML5 compliant versions of Microsoft Internet Explorer, Chrome, or Firefox.

### MODEL

DESCRIPTION	MODEL
BACnet router	BAC-5051E



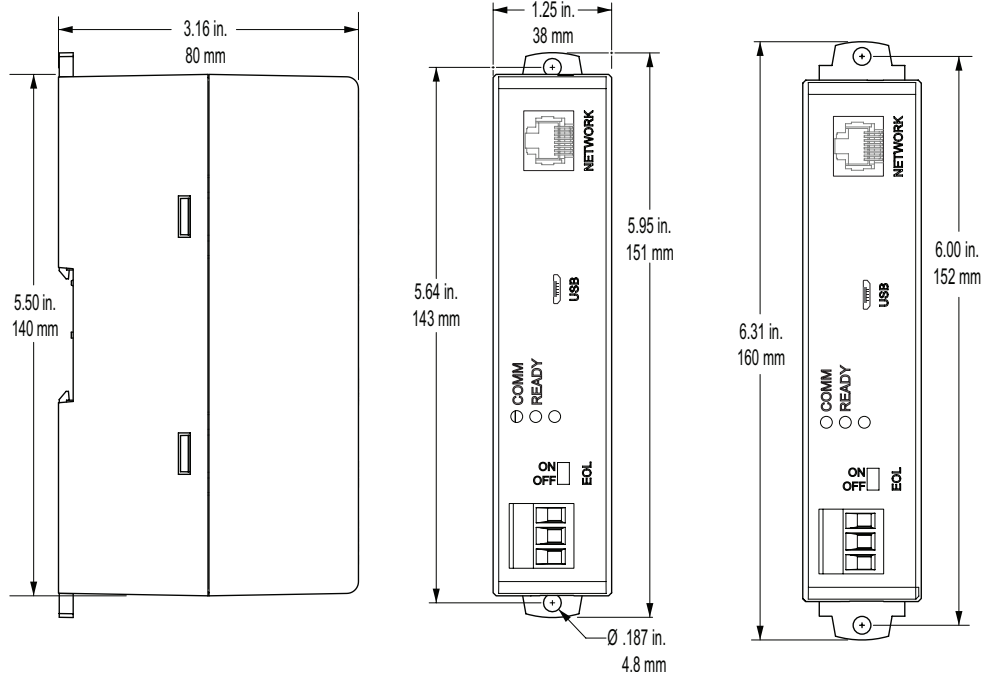
Router network configuration

#### Routing Protocols

- One MS/TP network
- One BACnet Ethernet
- Two IP ports that can be set up for any of the following protocols:
  - Normal BACnet IP network routing
  - BACnet broadcast management device with network and port address translation
  - Foreign device registration with BACnet broadcast management devices (BBMD)
  - PAD (packet assembling/disassembling) routing

# SPECIFICATIONS

## Dimensions



## Hardware Features

### Processor and Memory

Processor	32-bit ARM® Cortex-M4
Memory	Configuration parameters and diagnostics are stored in nonvolatile memory; auto restart on power failure

### Indicators

- Power
- MS/TP communication
- Ethernet status

## Installation

### Power

AC supply voltage	24 volts AC (-15%, +20%), 50/60 Hz, Class 2 only; non-supervised All circuits, including supply voltage, are power limited circuits.
DC supply voltage	24 volts DC (-15%, +20%) 5 volts DC through USB connection for temporary service connection
Required power	8 VA

## Enclosure and Mounting

Weight	5.3 ounces (149 grams)
Case material	Green and black flame retardant plastic
Mounting	Surface mount or 35 × 7.5 mm DIN rail

## Environmental Limits

Operating	32 to 120° F (0 to 49° C)
Shipping	-40 to 160° F (-40 to 71° C)
Humidity	0 to 95% relative humidity, non-condensing

## Network connections

### BACnet Ethernet and IP

10/100BaseT, RJ-45 connector

### BACnet MS/TP

- One MS/TP port, supports speeds from 9,600 to 115,200 baud
- Removable three-screw terminal block, 12–22 AWG wire
- Switched end-of-line termination

### USB

USB micro B connection for power and communication to use as a service tool.

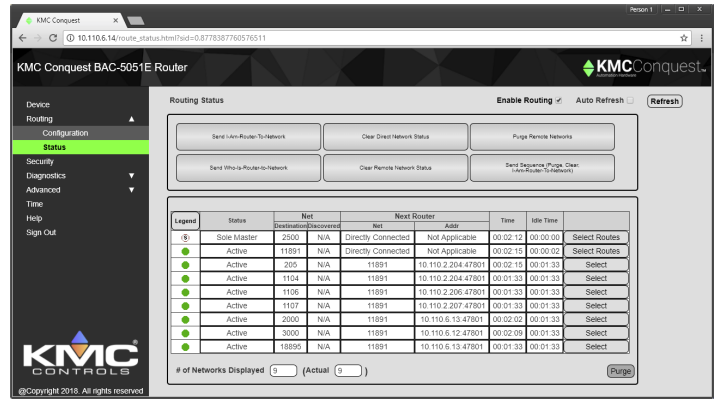
# Timekeeping

The router is a BACnet time master device that can maintain time with or without an SNTP server. Time messages can be broadcast daily, weekly, or monthly to all or selected networks. Time messages are formatted as UTC, local, or both.

# Agency and Regulatory Approvals

- BTL Listed as meeting the BACnet Testing Laboratory profile B-RTR.
- UL UL 916 Energy Management Equipment
- RoHS RoHS compliant (pending)
- CE CE compliant
- FCC FCC Class A, Part 15, Subpart B and complies with Canadian ICES-003 Class A\*

\*This device complies with part 15 of the FCC Rules. Operation is subject to the following two conditions: (1) This device may not cause harmful interference, and (2) this device must accept any interference received, including interference that may cause undesired operation.



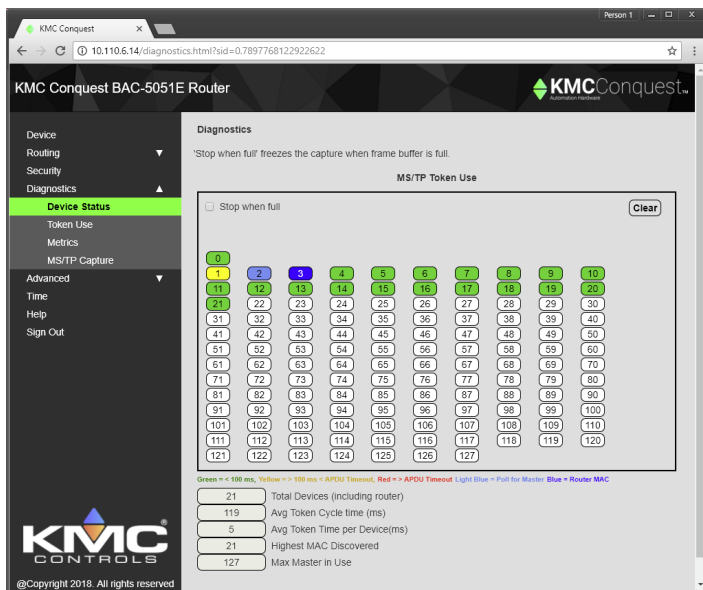
BACnet routing status

# ACCESSORIES

- KMD-5567** MS/TP network surge suppressor
- XEE-6111-050** 50 VA, single-hub transformer
- XEE-6112-050** 50 VA, dual-hub transformer
- HPO-5551** Conquest router tech cable kit  
Includes USB, Ethernet, and MS/TP to NetSensor cables
- HSO-9001** Ethernet patch cable, 50 feet
- HSO-9011** Ethernet patch cable, 50 feet, plenum rated

# SUPPORT

Additional resources for installation, configuration, application, operation, programming, upgrading and much more are available on the web at [www.kmcccontrols.com](http://www.kmcccontrols.com). To see all available files, log-in to the KMC Partners site.



MS/TP network diagnostics