

### Description and Application

These tri-state ControlSet Actuators are designed to control small dampers, such as air terminal unit dampers. The MEP-5061 is an 18°/minute actuator, and the MEP-5071 is a 60°/minute actuator. A minimum of 50 in-lb. of torque over the maximum angular rotation of 95° is provided.

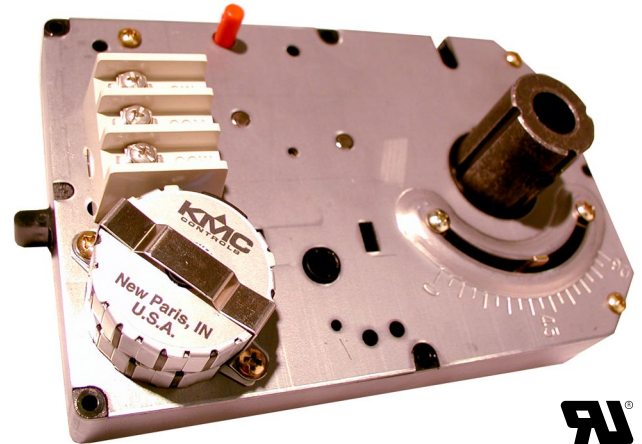
The actuator mounts to a 1/2-inch or 3/8-inch diameter damper shaft, eliminating the need for expensive and complicated linkages. When mounting to a 3/8-inch diameter shaft, the HFO-0011 shaft adaptor is required and must be ordered separately.

These bidirectional motors may be controlled via an SPDT floating thermostat or building automation system. Both minimum and maximum end stops are standard to limit the rotation. A non-rotation bracket, to prevent lateral movement, is included with each actuator. A gear disengagement button allows manual positioning of the damper and/or gear train without energizing the actuator.

The actuators are protected against overloading. An optional feedback potentiometer and/or a (single or double) auxiliary switch can be field installed.

### Features

- ◆ Direct mounting to standard shaft sizes
- ◆ Available in 18° and 60° per minute models
- ◆ Bi-directional motors can be controlled by an SPDT floating thermostat or a building automation system
- ◆ Adjustable end stops
- ◆ Gear disengagement button for manual positioning



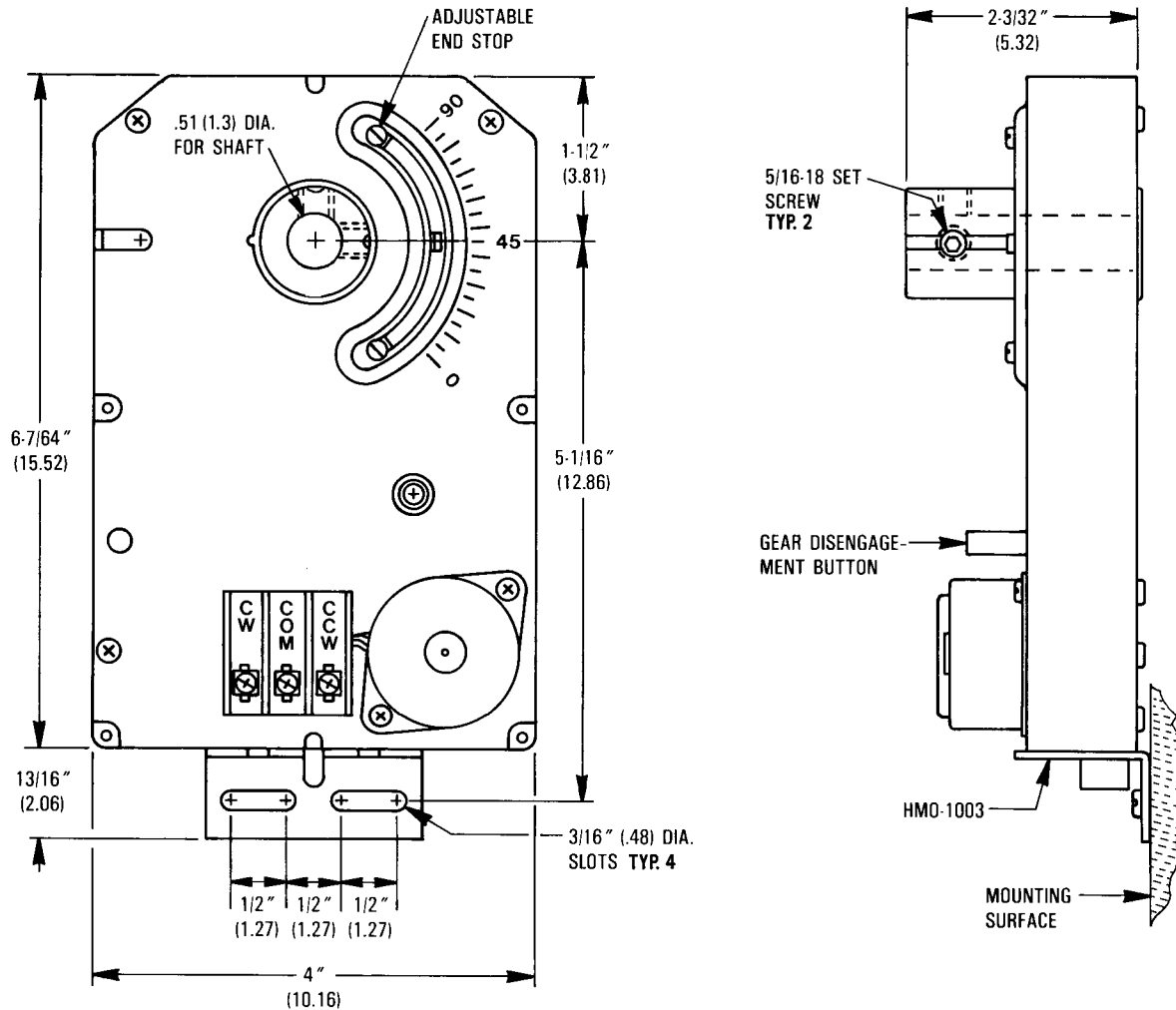
### Models

MEP-5061	18°/minute actuator
MEP-5071	60°/minute actuator
(Both models are UL Recognized)	

### Accessories/Repair Parts

HFO-0011	3/8" shaft adaptor
HMO-1003	Replacement non-rotation bracket
HCO-1151	12 <sup>7</sup> / <sub>16</sub> x 7 x 3 <sup>1</sup> / <sub>4</sub> " weather enclosure

All dimension are in inches (mm)



Specifications

<b>Supply Voltage</b>	24 VAC (+20%/-15%), Class 2 only
<b>Maximum Power</b>	2 VA
<b>Control Input</b>	Tri-state (see Supply Voltage)
<b>Angular Rotation</b>	0° to 95°, adjustable stops on both ends
<b>Motor Timing</b>	
MEP-5061	18°/minute @ 60 Hz; 15°/minute @ 50 Hz
MEP-5071	60°/minute @ 60 Hz; 50°/minute @ 50 Hz
<b>Torque</b>	50 in-lb. (5.7 N•m) minimum
<b>Connections</b>	Wire clamp type; 14-22 AWG, copper
<b>Mounting</b>	Direct mounting on $\frac{1}{2}$ " or (with HFO-0011 adaptor) $\frac{3}{8}$ " shafts

<b>Dimensions</b>	See diagram above
<b>Weight</b>	2 lb. (0.91 kg)
<b>Material</b>	Flame retardant plastic
<b>Approvals</b>	UL 873 Temperature Indicating and Regulating Equipment
<b>Environmental Limits</b>	
Operating	0 to 120° F (-18 to 49° C)
Shipping	-40 to 140° F (-40 to 60° C)
Humidity	5 to 95% RH (non-condensing)

**KMC Controls, Inc.**  
 19476 Industrial Drive, New Paris, IN 46553  
 574.831.5250  
 www.kmcccontrols.com  
 info@kmcccontrols.com