

### Description and Application

This solid-state triac relay provides zero-crossing AC switching (**up to 1 A at 30 VAC**) for use in building automation systems or any system where transients may pose a problem.

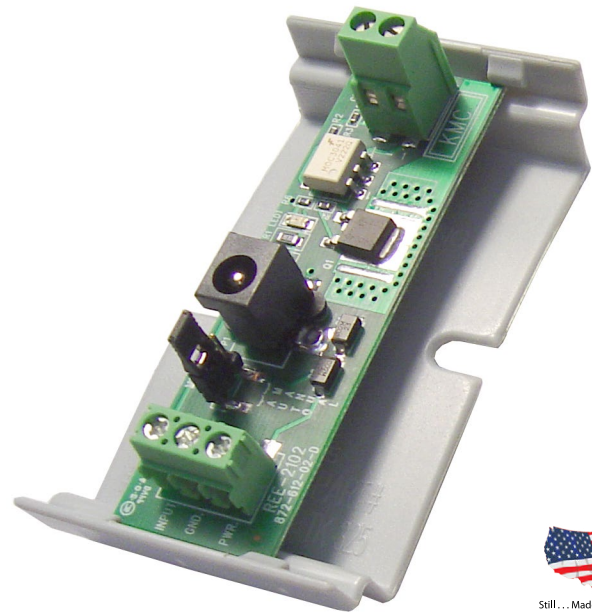
A status LED is associated with the output of the relay to indicate when the output is switched on. An Auto-Manual-Off jumper is provided so the output may be overridden (manual override operation requires auxiliary power).

**NOTE:** The four-relay REE-2101 was discontinued—use multiple REE-2102s instead. For higher power (5 A) needs, see the [REE-2104 relay](#).

**NOTE:** Triacs are for switching AC only.

### Features

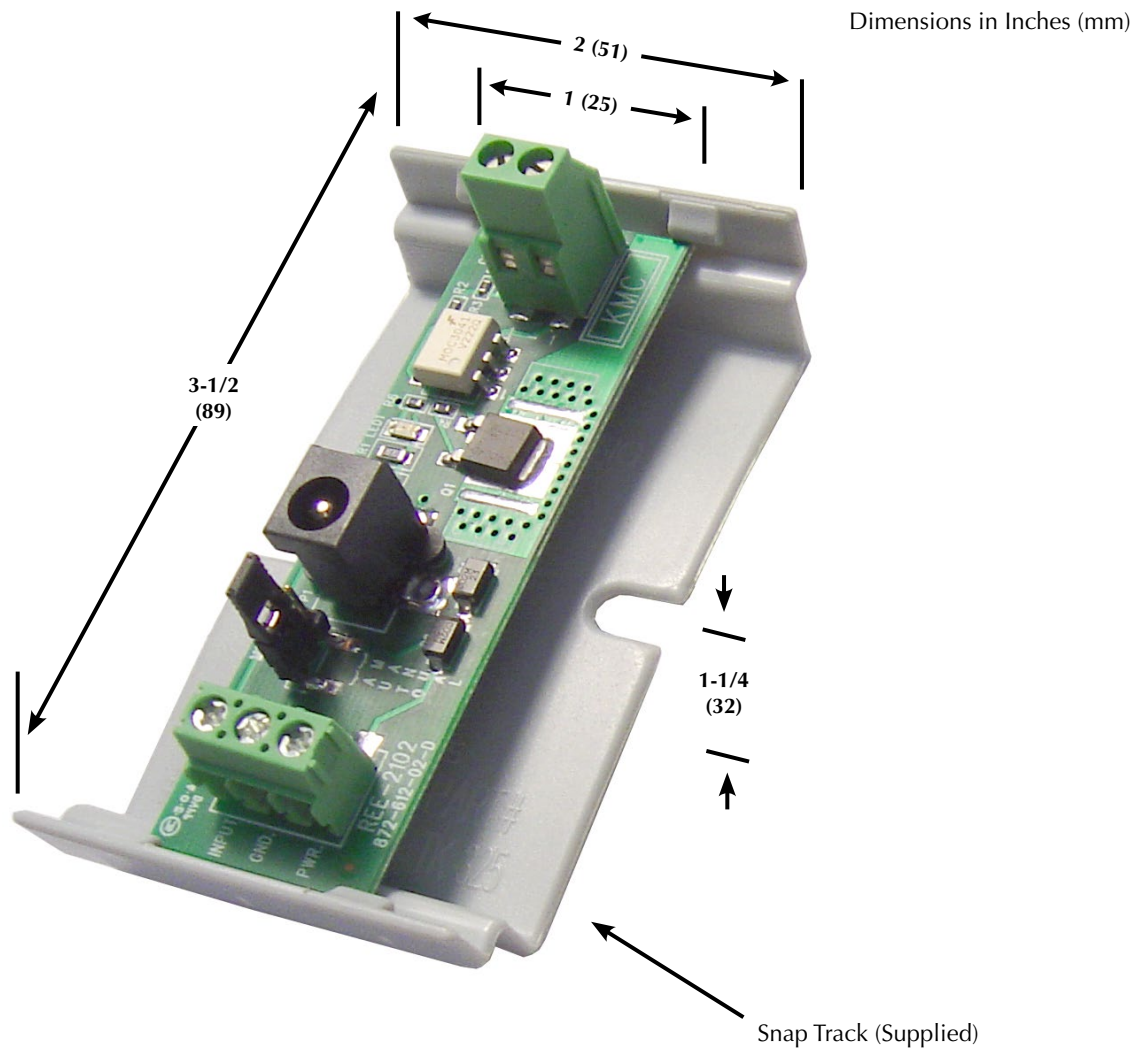
- ◆ Precise zero crossing for fast switching
- ◆ High immunity to false operation
- ◆ No mechanical contacts for reduced costs and downtime
- ◆ Output rating of up to 1 A at 30 VAC



### Specifications

<b>Output Rating</b>	12 VAC min. to 30 VAC max., 20 mA min. to 1 amp. max.	<b>Mounting</b>	Provided with 3.25" (83 mm) Snap Track; mounting is not position sensitive
<b>Input Power (Control and/or Auxiliary)</b>	10 to 14 VDC, 18 to 30 mA (auxiliary power is only required to enable manual- override functions)	<b>Approvals</b>	SASO PCP Registration KSA R-103263
<b>Connections</b>		<b>Material</b>	Flame retardant plastic
Input/Output	Screw terminals for 18–22 AWG copper	<b>Weight</b>	1.2 oz. (34 grams)
Auxiliary Power	Screw terminals for 18–22 AWG copper or 2.5 mm female connector	<b>Temperature Limits</b>	
		Operating	0 to 120° F (–18 to 49° C)
		Shipping	–40 to 140° F (–40 to 60° C)

## Dimensions



**KMC Controls, Inc.**  
19476 Industrial Drive, PO Box 497  
New Paris, IN 46553  
574.831.5250  
[www.kmcccontrols.com](http://www.kmcccontrols.com)  
[info@kmcccontrols.com](mailto:info@kmcccontrols.com)