



## Contents

Minimum Requirements .....	1
Select a Location .....	1
Initial Setup .....	2
Unboxing .....	2
Installation .....	3
Prepare the Panel .....	3
Install the Mounting Plate .....	3
Mount the Power Supply to the Panel .....	4
Mount the USB-to-Ethernet Adapter to the Panel .....	4
Connect the Power .....	5
Mount the Tablet Assembly to the Panel .....	6
Support Documents .....	7
Contact Information .....	7
Important Notices .....	7

## Minimum Requirements

Installation requires the following minimum **hardware and connections**:

- ◆ **7" Touch Screen Display (P/N DISPLAY-7)**  
tablet
- ◆ **Power source**
- ◆ **USB-to-Ethernet adapter** (for Ethernet connection)
- ◆ **Mounting plate and hardware**
- ◆ **Internet connection** (via **Wi-Fi** or **Ethernet** Cat-5 cable)

**Information** required to complete installation includes:

- ◆ The relevant **network addresses and information** from the building's IT department
- ◆ A **list of all points in all controllers** that will be monitored

## Select a Location

The 7" Touch Screen Display is designed to be mounted to the surface of a standard electrical panel.

Before installing the display:

1. Complete any preparation work to the panel.
2. Make sure there is proper grounding.

# Initial Setup

## Unboxing

1. Remove the 7" Touch Screen Display tablet from the carton and place it temporarily in a secure area.
2. Verify that the included hardware is present. This includes:

**A** (1) USB-to-Ethernet adapter (with micro USB connector cable)

**B** (1) One switched-mode power supply

**C** (1) Mounting plate and printed template

**D** (1) Frame

**E** (1) Plastic bag containing:

(1) ring wire grounding terminal

(1) plastic grommet strip

(2) lever-action wire terminals

(5) M3 x 6 mm x ¼ inch screws

(2) M3 x 6 mm x 1 inch screws

(2) nylon insert locking nuts

(2) clinch nuts

(2) serrated lock washers

(1) Allen wrench

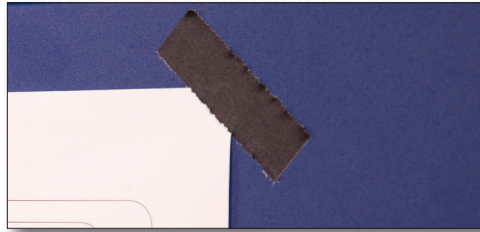


**NOTE:** Do not discard the **7" Touch Screen Display Quick Start Guide** included in the shipping carton. It contains information on how to initially configure the device. (If it is lost, however, download the most recent version from the KMC Partners site. Refer to [Support Documents](#) on page 7.)

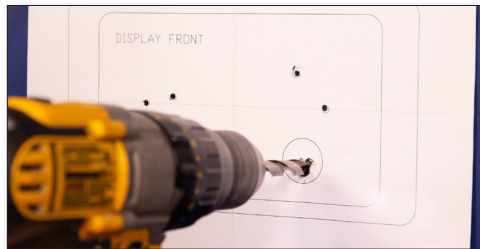
# INSTALLATION

## Prepare the Panel

1. Use tape to temporarily attach the mounting template to the desired location on the panel.



2. Drill the holes.



3. Fit the grommet strip along the edge of the 1 inch (26 mm) hole.



## Install the Mounting Plate

Complete the following steps to attach the mounting plate to the panel.

1. Attach the mounting plate to the front of the panel using the two (2) 1-inch screws provided.



2. Place one nylon lock nut on the exposed end of each bolt and tighten against the back of the panel.



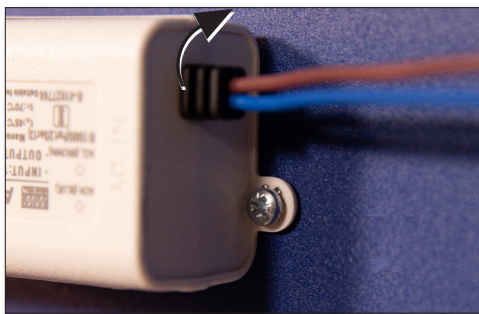
## Mount the Power Supply to the Panel .

Complete the following steps to mount the power supply to the panel.

1. Align the bracket holes on the power supply with those matching on the back of the mounting plate.



2. Attach the power supply by placing one serrated lock washer onto each of the two (2) 6 mm screws and inserting the assembly through the bracket and the back of the panel.



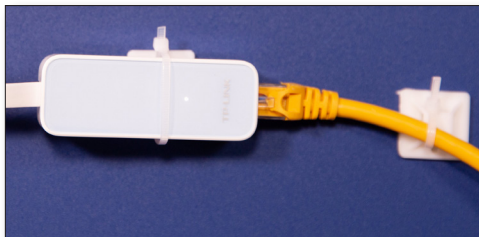
3. Place one clinch nut onto each exposed bolt and secure against the front of the plate.



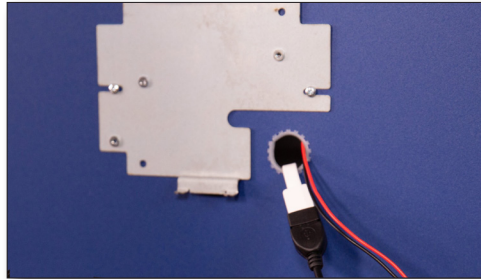
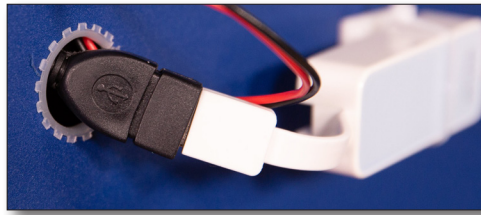
## Mount the USB-to-Ethernet Adapter to the Panel

**NOTE:** The following steps apply if an Ethernet connection will be used.

1. Attach the USB-to-Ethernet adapter to the back of the panel. The following example uses cable ties and adhesive cable tie mounting pads (not included).



2. Feed the the micro USB plug and power supply barrel plug through the 1 inch (26 mm) hole in the panel.



## Connect the Power

Complete the following steps to connect the power supply to the power source and tablet.

**WARNING: You can be killed or seriously injured if you contact live, high-voltage circuits. Follow all local electrical codes and lock-out and tag-out procedures when connecting or working on power supplies.**

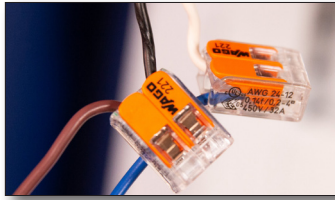
1. Open each terminal lever by pulling the free end of the tab away from the face of the terminal block.
2. Insert the end of the neutral (blue) wire into one port on one of the terminal blocks.
3. Close the tab to secure the wire.
4. Insert the end of the phase (brown) wire into one of the ports on the other terminal block.



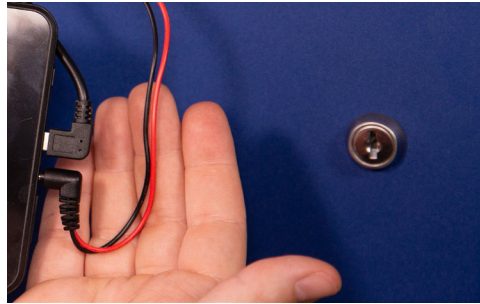
5. Close the tab to secure the wire.
6. Insert the neutral wire from the connection to a 100–200 VAC power source into the other port on the neutral (blue) wire terminal block.
7. Close the tab to secure the wire.
8. Insert the phase wire from the connection to a 100–200 VAC power source into the remaining port on the phase (brown) wire terminal block.



9. Close the tab to secure the wire.



3. Connect the barrel plug from the power supply to the round socket on the right edge of the display.
4. Connect the micro USB plug from the USB-to-Ethernet adapter to the micro USB socket on the right edge of the display.



**NOTE:** KMC Controls recommends setting up the tablet for use before mounting to the panel is completed. Refer to the **Quick Start Guide** or **User Guide** for these procedures.

## Mount the Tablet Assembly to the Panel

1. Temporarily remove two of the corner brackets along one edge of the frame. This provides room to insert the tablet and power and communication cables.



2. Ease the display into the frame.
3. Re-attach the two corner brackets to secure the tablet to the frame.
4. Make sure that the power and micro USB cables are not dislodged or crimped.
5. Use the long groove along the top inside edge of the frame to align the display-frame assembly over the mounting plate, swinging the assembly into place from the top.
6. Use the Allen wrench to tighten the set screw on the bottom of the assembly against the mounting plate.

## Support Documents

For the **7" Touch Screen Display Quick Start Guide**, **7" Touch Screen Display User Guide**, and **7" Touch Screen Display Data Sheet**, log on to the KMC Partners site ([partners.kmccontrols.com](http://partners.kmccontrols.com)) and type the part number **DISPLAY-7** in the Search field.

**NOTE:** Documents, product design, and product specifications are subject to change without notice.

## Contact Information

KMC Controls, Inc.  
19476 Industrial Drive  
New Paris, IN 46553  
U.S.A.  
TEL: 1.574.831.5250 or 877.444.5622  
FAX: 1.574.831.5252  
Email: [info@kmccontrols.com](mailto:info@kmccontrols.com)  
Web (Public): [www.kmccontrols.com](http://www.kmccontrols.com)  
Web (Partners): [partners.kmccontrols.com](http://partners.kmccontrols.com)

## Important Notices

The material in this document is for information purposes only. The contents and the product it describes are subject to change without notice.

KMC Controls, Inc. makes no representations or warranties with respect to this document. In no event shall KMC Controls, Inc. be liable for any damages, direct, or incidental, arising out of or related to the use of this document.

The KMC logo is a registered trademark of KMC Controls, Inc. All rights reserved.

