

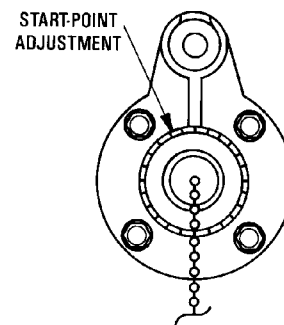
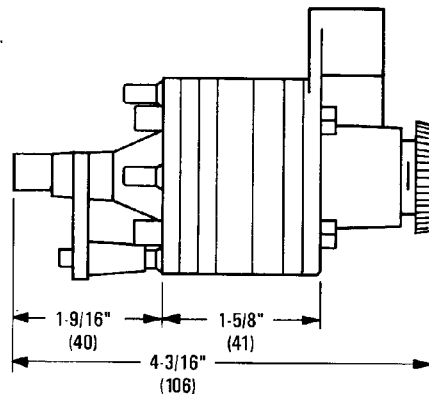
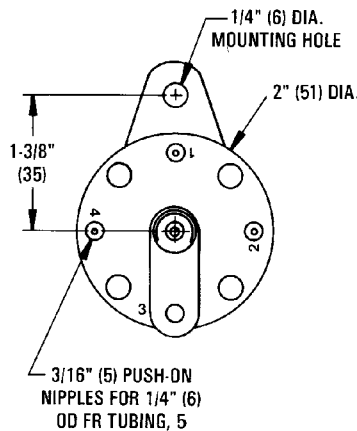
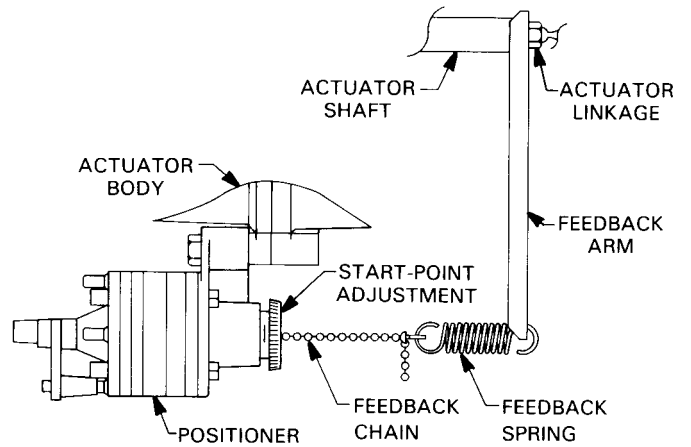
# Installation Guide

## Mounting

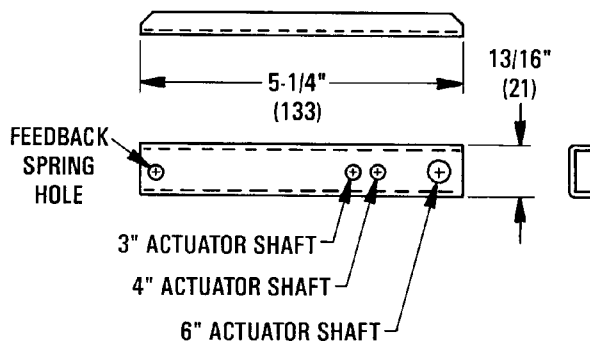
The CMC-1001 mounts directly on MCP-1030/1130/1040/1140/1160/5140/5160 series actuators.

1. At the mounting location, remove **one** of the screws or bolts that holds the **actuator** housing together. **Do NOT remove more than one actuator screw or bolt.**
2. Slide the positioner over the mounting boss.
3. Reinstall the screw or bolt. **Be careful not to cross-thread the actuator housing.**
4. Using the proper hole in the feedback arm (VTD-1500), slide the arm over the actuator shaft. The arm is held between the shaft and the damper linkage.
5. Connect the 5 psi or 10 psi feedback spring (ordered separately – see chart) to the hole at the base of the feedback arm.

6. Connect the other end of the feedback spring to the feedback chain. There should be no slack between the positioner and the arm.



All dimension are in inches (mm)



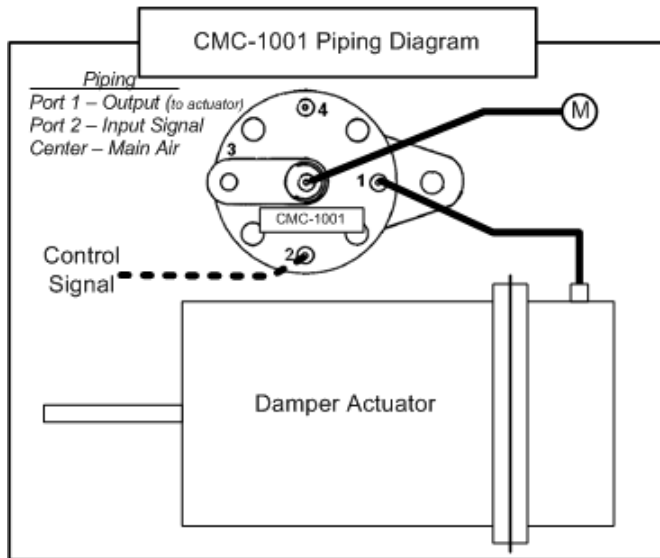
ACTUATOR STROKE	FEEDBACK SPRINGS	
	5 PSI SPAN	10 PSI SPAN
3"	VTD-2250	VTD-2260
4"	VTD-2251	VTD-2261
6"	VTD-2252	VTD-2262

## Connections

1. Using 1/4" (6 mm) O.D. FR tubing, connect the main air supply to the center 3/16" (5 mm) port. Provide a supply of clean, dry, 20–30 psi (38–207 kPa) control air.
2. Connect the control signal to Port 2 (input).
3. Connect Port 1 (output) to the actuator. For 3" and 4" actuators (only), insert the small beige in-line restrictor (VTD-2500) in the line between Port 1 and the actuator. The restrictor is not needed for 6" actuators.

## ▲ CAUTION

Pneumatic devices must be supplied with clean, dry control air. Any other medium (e.g., oil or moisture contamination) will cause the device to fail.



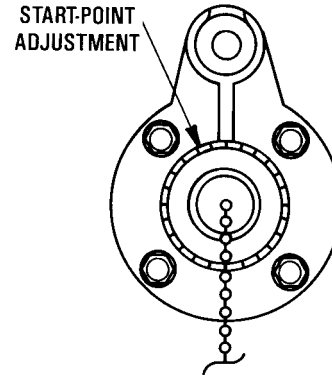
## Maintenance

No routine maintenance is required. Each component is designed for dependable, long-term reliability, and performance. Careful installation will also ensure long-term reliability and performance.

## Adjustments and Calibration

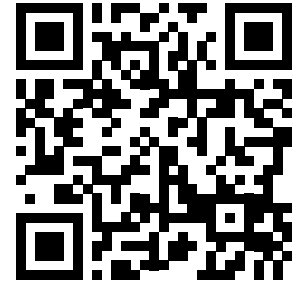
Once connections are complete and supply air is applied, turn the start-point adjustment dial until the actuator begins to move.

For example, a start point of 4 psi with a 5 psi span spring will yield an operating range of 4–9 psi.



## More Information

For accessories, specifications, and other information, see the [CMC-1001 Data Sheet](#) on the KMC web site ([www.kmcccontrols.com](http://www.kmcccontrols.com)).



## Important Notices

The material in this document is for information purposes only. **The contents and the product it describes are subject to change without notice.** KMC Controls, Inc. makes no representations or warranties with respect to this document. In no event shall KMC Controls, Inc. be liable for any damages, direct or incidental, arising out of or related to the use of this document.

**KMC Controls, Inc.**  
19476 Industrial Drive  
New Paris, IN 46553  
574.831.5250  
[www.kmcccontrols.com](http://www.kmcccontrols.com)  
[info@kmcccontrols.com](mailto:info@kmcccontrols.com)